

Historic, Archive Document

Do not assume content reflects current scientific knowledge, policies, or practices.

6261

MOORE

Hardy Deciduous and Evergreen Trees

VINES, SHRUBS AND FRUITS

LIBRARY
RECEIVED
FEB 19 1930 ★
U. S. Department of Agriculture.

1930



THE MORRIS NURSERY CO.

47 West 34th Street • Marbridge Building

NEW YORK • NY

Introductory Remarks



TO CORRESPONDENTS: We desire to thank the public for their liberal patronage, and solicit a continuance of the same. We aim to grow and supply the best of stock at the lowest prices consistent with the quality of stock offered. Where a large number of trees and plants are required we solicit a list of wants for special quotations.

LOCATION: The nurseries are located at West Chester, county seat of Chester County, in one of the richest and most fertile spots in Pennsylvania, having the richest soil and best climate to be found in this country for growing nursery stock; 117 miles west of New York City and 27 miles west of Philadelphia.

PRICES are f.o.b. nurseries, point of shipment. Stock furnished at special net prices in carload lots, freight charges to follow from point of shipment unless otherwise agreed upon. Prices subject to change without notice. **PRICES SUPERCEDE ALL OTHERS.**

SHIPPING: Spring season commences between March 15th and April 1st, and continues to June. Autumn season commences in September and ends with the freezing of the ground in December. Orders should be placed early to insure good stock and varieties wanted.

MISTAKES: We give most careful attention to the shipping of varieties as ordered and warrant our stock true to name, but we do not hold ourselves responsible to any greater extent than the original cost of the goods or replacing the same. Shipments are made when stock is in best condition for removal. Most deciduous trees and shrubs succeed well both in Spring and Autumn planting. Evergreens do better if planted in April or May.

REFERENCES: All orders from unknown parties must be accompanied by check, draft, express or money order, unless satisfactory reference is given. To avoid mistakes write the order plainly, giving both post office and shipping directions. All articles are at the risk of the purchaser after being delivered to the railroad or express companies.

COMPLAINTS will not receive consideration unless made upon receipt of the goods. By careful consideration of the wants of the public and strict attention to business we hope to receive a liberal share of your patronage.

GARDENERS: We have on file in our office names of competent gardeners wanting employment such as we can recommend to our patrons as trustworthy and reliable. There is no charge for registering or for the service.

LANDSCAPE ARCHITECT: We are prepared to furnish a first-class landscape architect and engineer to make surveys, draw plans and give estimates for the building of roads and walks and the planting of trees and plants required for such work. We solicit correspondence from all who need such service.

The Morris Nursery Company

47 West 34th Street

NEW YORK, N. Y.

Deciduous Shade and Ornamental Trees

ACER. Maple

- A. **dasycarpum**. Silver-leaved Maple. Light green foliage, silvery beneath; hardy, rapid growth. 8 to 10 ft., \$3.50 each; 10 to 12 ft., \$4.50 each.
- A. **dasycarpum wieri laciniatum**. Wier's Cut-leaved Silver Maple. A beautiful variety with dissected foliage and long, drooping branches. 8 to 10 ft., \$4.00 each; 10 to 12 ft., \$6.00 each.
- A. **dissectum**. Green Cutleaf Japanese Maple. A dwarf tree with fine cut leaves and very attractive throughout the summer and beautiful in the Fall when frost tints the leaves in orange shades. 12-15 in. B&B \$6.50 each; \$55.00 per 10; 15-18 in. B&B \$8.50 each; \$75.00 per 10.
- A. **dissectum**. Purple Cutleaf Japanese Maple. Dwarf with fine cut purple red leaves giving the plant a very graceful appearance. 12-15 in. B&B \$6.50 each; \$55.00 per 10; 15-18 in. B&B \$8.50 each; \$75.00 per 10.
- A. **negundo**. Ash-leaved Maple, or Box Elder. A quick grower, hardy tree, with Ash-like foliage, well suited for seaside planting. 8 to 10 ft., \$3.00 each; 10 to 12 ft., \$4.00 each.
- A. **platanoides**. Norway Maple. Handsome European tree; large, symmetrical, with shining deep green leaves; fine shade tree. 8 to 10 ft., \$6.00 each; 10 to 12 ft., \$7.00.
- A. **platanoides schwedleri**. Schwedler's Norway Maple. Young foliage, purplish-crimson, changing to deep green in Autumn. 6 to 8 ft., \$50.00 per 10; 8 to 10 ft., \$60.00.
- A. **rubrum**. Red, or Scarlet Maple. Deep red blossoms before the leaves in Spring; in Autumn the foliage turns to brilliant scarlet, very showy. 8 to 10 ft., \$7.00 each.
- A. **saccharinum**. Sugar, or Rock Maple. A tree of stately pyramidal growth and large size; one of the finest trees for street or avenue. 8 to 10 ft., \$5.00 each; 10 to 12 ft., \$6.00.
- A. **tataricum, var. ginnala**. A beautiful hardy tree of moderate, dwarf growth and foliage turns a bright red in Autumn; can be used as a substitute for Japan Maples. 4 to 5 ft., \$3.00.

JAPANESE MAPLES

- A. **polymorphum atropurpureum**. Dark Purple-leaved Maple. Fine cut-leaved; leaves dark reddish purple. 18 to 24 in., \$10.00 each.

AMELANCHIER

- A. **canadensis**. Juneberry, or Servicetree. One of the best early flowering trees; covered with white flowers in April followed by small purplish fruit. 2 to 3 ft., \$9.00 per 10; 3 to 4 ft., \$10.00 per 10.

ANDROMEDA. aborea

- A. **oxydendrum**. Sourwood. Graceful clusters of white flowers. August. Good leathery foliage. Fine Autumn coloring. 2 to 3 ft., \$15.00 per 10; 3 to 4 ft., \$20.00 per 10

ARALIA. Angelica Tree

- A. **spinosa**. Hercules-club. A native variety, very thorny and of striking appearance. 4 to 5 ft., \$9.00 per 10.

BETULA. Birch

- B. **alba**. White Birch. A graceful tree with silvery bark, habit erect at first, but droops with increasing growth. 4 to 6 ft., \$3.00 each; 6 to 8 ft., \$4.00 each.
- B. **alba laciniata pendula**. Cut-leaved Weeping Birch. A slender, weeping tree of vigorous growth, with silvery bark and finely cut foliage. 4 to 6 ft., \$3.00 each; 6 to 8 ft., \$5.00 each.
- B. **lutea**. Yellow Birch. Makes fine windbreak—good foliage. 4 to 6 ft., \$20.00 per 10; 6 to 8 ft., \$27.00 per 10.
- B. **nigra**. River Birch. Thrives in moist places. The characteristic torn ragged bark very effective in naturalistic planting. 3 to 4 ft., \$20.00 per 10; \$160.00 per 100; 4 to 5 ft., \$25.00 per 10; \$210.00 per 100.



BETULA. Birch

Deciduous Shade and Ornamental Trees

- B. **populifolia**. Gray Birch. Succeeds in poor dry soil. The bark becomes whiter with age. Effective in natural clumps. 4 to 6 ft., \$18.00 per 10; \$155.00 per 100; 6 to 8 ft., \$27.00 per 10; \$210.00 per 100; 8 to 10 ft., \$32.00 per 10; \$260.00 per 100.
- B. **papyrifera**. Paper, or Canoe Birch. A tall and handsome tree with pure white bark. 4 to 6 ft., \$2.00 each; 6 to 8 ft., \$3.00 each.

CARPINUS. Hornbeam

- C. **americana**. American Hornbeam. Similar in growth to Beech; excellent for hedges. 3 to 4 ft., \$2.00 each.

CATALPA

- C. **bungei**. Standard. A remarkable small tree forming a symmetrical round head as regular in shape as if sheared, valuable for formal planting. 2-yr. heads, \$4.00 each.
- C. **speciosa**. Hardy Western Catalpa. A very valuable species combining rapidity of growth, handsome foliage and flowers; perfectly hardy. 6 to 8 ft., \$2.00 each; 8 to 10 ft., \$3.00 each.



CORNUS. Florida

CELTIS. Nettle-tree

- C. **occidentalis**. American Nettle-tree, or Hackberry. Usually a small tree in the East, but attains great size in the Southwest; general appearance of an Elm, but bears purplish berries. 4 to 5 ft., \$2.00 each.

CERCIDIPHYLLUM. Katsura-tree

- C. **japonicum**. An erect growing tree with rounded leaves, bright green, glaucous beneath. 3 to 4 ft., \$2.00 each; 4 to 5 ft., \$3.00 each.

CERCIS. Judas-tree

- C. **canadensis**. Redbud. American Judas-tree. A small, handsome tree, with the naked branches covered in early Spring with reddish-pink flowers; heart-shaped leaves. 3 to 4 ft., \$2.00 each; 4 to 5 ft., \$3.00 each.

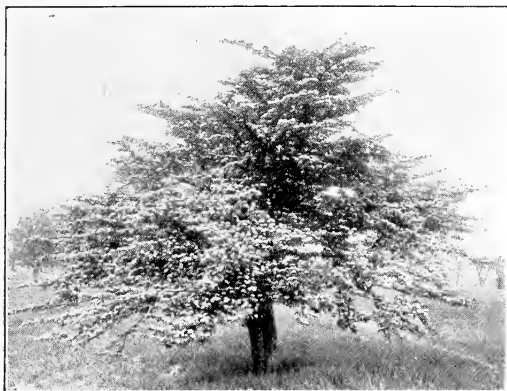
CORNUS. Dogwood

- C. **florida**. White Flowering Dogwood. Native Dogwood of graceful shape, white flowers before the leaves in Spring, followed by scarlet fruit. 3 to 4 ft., \$2.00 each; 4 to 5 ft., \$3.00 each.
- C. **florida rubra**. Red Flowering Dogwood. Flowers a bright rose; very ornamental. 3 to 4 ft., \$75.00 per 10.
- C. **kousa**. Kousa Dogwood. Large white flowers in June. Conspicuous cherry-like scarlet fruits, attractive to birds—scarce. 2 to 3 ft., \$5.00 per 10; 3 to 4 ft., \$20.00 per 10.



CATALPA. Bungei—(See page 7)

Deciduous Shade and Ornamental Trees



CRATAEGUS. Flowering Thorn

CRATAEGUS. Hawthorn

- C. **crataegus carrieri**. Carrier Hawthorn. Spreading branches—thick spines. Rather large orange-red fruits. Autumn color. 4 to 5 ft., \$27.00 per 10; 5 to 6 ft., \$32.00 per 10.
- C. **coccinea**. Scarlet-fruited Thorn. Large white flowers followed by scarlet fruit. 3 to 4 ft., \$25.00 per 10.
- C. **cordata**. Washington Hawthorn. Berries small, bright red, persist nearly all winter. Brilliant autumn foliage. 2 to 3 ft., \$15.00 per 10; 3 to 4 ft., \$18.00 per 10; 4 to 5 ft., \$30.00 per 10.
- C. **crusgalli**. Cockspur Thorn. Deep green shiny leaved distinctive hawthorn. Conspicuous white flowers, red fruits. Long thorns. 3 to 4 ft., \$18.00 per 10; 4 to 5 ft., \$27.00 per 10.
- C. **lutea**. Yellow-wood. Fragrant white flowers, June. 4 to 6 ft., \$27.00 per 10; 6 to 8 ft., \$37.00 per 10.
- C. **mollis**. Downy Hawthorn. Vigorous, large leaves. 3 to 4 ft., \$18.00 per 10; 4 to 5 ft., \$27.00 per 10.
- C. **oxycantha**. Common Hawthorn. The English hedge plant. Fragrant white flowers, 3 to 4 ft., \$15.00 per 10; 4 to 5 ft., \$20.00 per 10.
- C. **Paul's Scarlet Hawthorn**. Very double scarlet flowers freely produced. 3 to 4 ft., \$20.00 per 10; 4 to 5 ft., \$30.00 per 10.
- C. **Paul's Scarlet**. Very double scarlet flowers freely produced. 3 to 4 ft., \$21.00 per 10; 4 to 5 ft., \$26.00 per 10.

FAGUS. Beech

- F. **ferruginea**. American Beech. Forest tree with smooth, light gray bark and toothed leaves which hang on through the Winter after drying; stately form. 4 to 5 ft., \$5.00 each.
- F. **purpurea riversi**. Rivers' Purple Beech. Foliage crimson in early Spring, dark purple in Summer. The finest of purple-leaved trees. 3 to 4 ft., \$5.00 each.

- F. **sylvatica**. European Beech. Broader and shorter leaves than the American; similar growth. 3 to 4 ft., \$5.00 each.

FRAXINUS. Ash

- F. **americana**. American White Ash. Large trees with light green leaves and pale yellowish green flowers. 6 to 8 ft., \$20.00 per 10; 8 to 10 ft., \$25.00 per 10.

GYMNOCLADUS. Coffeetree

- G. **canadensis**. Kentucky Coffeetree. A tall tree with compound leaflets. Dark green with bluish tinge; rough bark; makes handsome specimen. 3 to 4 ft., \$15.00 per 10; 4 to 5 ft., \$25.00 per 10.

KOELREUTERIA. Varnishtree

- K. **paniculata**. A very desirable Chinese tree; small, round-headed; showy panicles of golden yellow flowers in July; foliage turns yellow in Autumn. 3 to 4 ft., \$1.50 each; 4 to 5 ft., \$2.00 each.

LARIX. Larch

- L. **europaea**. European Larch. A fast growing conifer; pyramidal form; light green leaves, turning yellow in Fall. 2 to 3 ft., \$2.00 each; 3 to 4 ft., \$3.00 each.



TILIA. Silver Linden—(See page 6)

Deciduous Shade and Ornamental Trees

LIQUIDAMBAR. Sweetgum

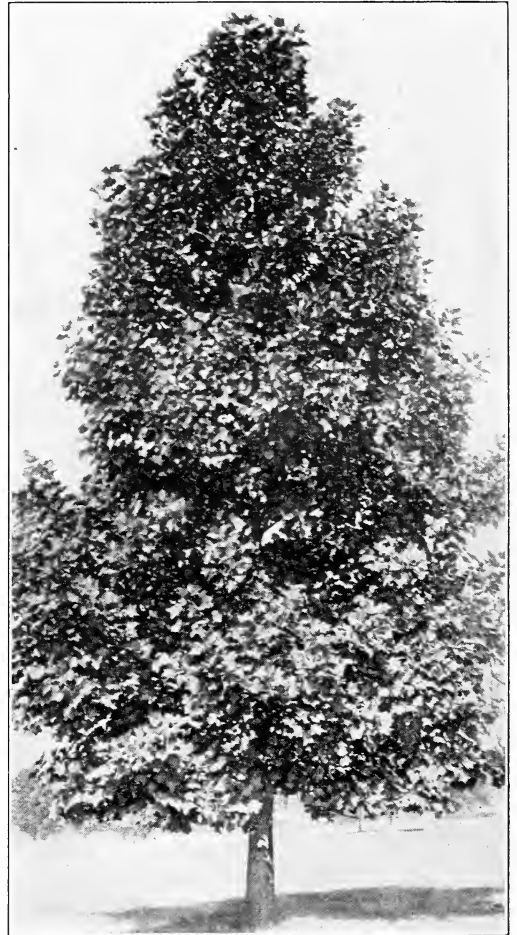
- L. styraciflua.** Sweetgum. Beautiful tree with corky bark and star-shaped foliage, glossy green in Summer, changing to crimson, scarlet gold and bronze in Autumn. 5 to 6 ft., \$4.00 each; 6 to 8 ft., \$5.00 each.

LIRIODENDRON. Tuliptree

- L. tulipifera.** Tuliptree, or Whitewood. A superb native tree of spreading form and fine foliage, large yellow flowers marked with orange; difficult to transplant. 6 to 8 ft., \$2.00 each; 8 to 10 ft., \$3.00 each; 10 to 12 ft., \$4.00 each.

MALUS

- M. arnoldiana.** Arnold Crab. White flowers, compact habit. 3 to 4 ft., \$20.00 per 10; 4 to 5 ft., \$25.00 per 10.
- M. atrosanguinea.** Carmine Crab. Red flowers freely borne. 3 to 4 ft., \$15.00 per 10; 4 to 5 ft., \$20.00 per 10.
- M. coronaria.** Sweet Crab. Fragrant blush pink flowers in April. 3 to 4 ft., \$15.00 per 10; 4 to 5 ft., \$20.00 per 10.



LIRIODENDRON. Tuliptree—(See page 4)



POPULUS. Poplar—(See page 5)

- M. sargentii.** Sargent Flowering Crab Apple. Pure white, very compact and dwarf—small scarlet fruits hang on almost 'till Spring. Distinct. 3 to 4 ft., \$25.00 per 10; 4 to 5 ft., \$30.00 per 10.
- M. scheideckeri.** Scheidecker Flowering Crab Apple. Double pink lasting flowers. Large yellow fruits—branches form narrow pyramidal heads. 3 to 4 ft., \$20.00 per 10; 4 to 5 ft., \$25.00 per 10.
- M. floribunda.** Single flowers, carmine in bud, white when open, ornamental fruit. 3 to 4 ft., \$2.00 each; 4 to 5 ft., \$3.00 each.
- M. ioensis.** Bechtel's Double Flowering Crab. Large double, fragrant flowers of delicate pink in Spring; graceful tree, very hardy. 3 to 4 ft., \$2.00 each; 4 to 5 ft., \$3.00 each.
- M. parkmani.** Parkman's Flowering Crab. Long narrow shining green leaves, semi-double, carmine flowers in May. 3 to 4 ft., \$2.00 each; 4 to 5 ft., \$4.00 each

Deciduous Shade and Ornamental Trees

- M. spectabilis.** Double Chinese Crab. Fragrant flowers in May, white and rose-flowered form. 3 to 4 ft., \$2.00 each; 4 to 5 ft., \$3.00 each.

MAGNOLIA

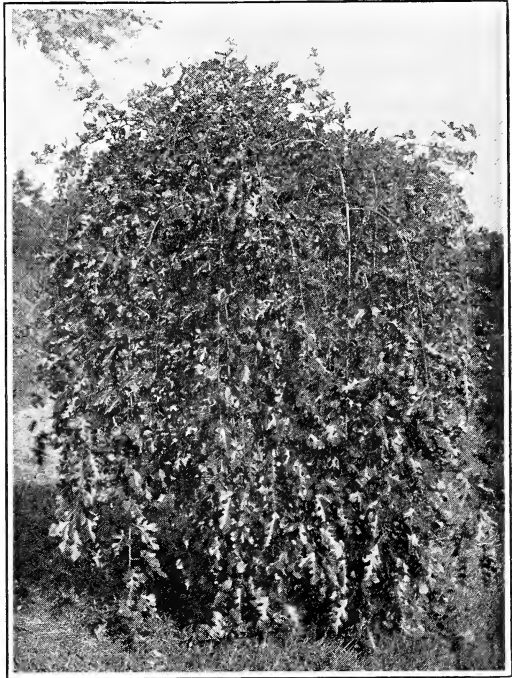
- M. glauca.** Laurel Magnolia, Sweetbay. Native variety, with handsome leaves and pure white, very fragrant flowers in Summer. 2 to 3 ft., \$5.00; 3 ft., \$6.00 each.
- M. tripetala.** Umbrella-tree. Hardy, low growing tree, immense leaves, white flowers in June. Fruit turns red in Autumn. 2 to 4 ft., \$3.00 each; 4 ft., \$4.00 each.

MORUS. Mulberry

- M. tatarica pendula.** Tea's Weeping Mulberry. One of the prettiest small weeping trees; forms an umbrella-shaped head with slender branches drooping to the ground. 4 to 5 ft., \$5.00 each.

PERSICA. Peach

- P. vulgaris alba pleno.** Double White Flowering Peach. Very hardy and ornamental; a mass of double white flowers. 2 ft., \$1.00 each; 3 to 4 ft., \$1.50 each.



MORUS. Weeping Mulberry

- P. Crimson.** Double Flowering Crimson Peach. Beautiful dark crimson flowers. 3 to 4 ft., \$1.50 each.

PHELLODENDRON. Corktree

- P. amurense.** Chinese Corktree. A rapid growing tree, resembling the Ailanthus in habit; thick, corky bark, pinnate foliage, greenish flowers. 4 to 5 ft., \$3.00 each; 6 to 8 ft., \$4.00 each; 8 to 10 ft., \$6.00 each.

PLATANUS. Planetree

- P. orientalis.** Oriental Planetree. A well known tree of rapid growth, valuable on account of its being immune from injurious insects and disease; immense foliage, deeply cut, good for street and park planting. 8 to 10 ft., \$30.00 per 10; 10 to 12 ft., \$40.00 per ten.

POPULUS. Poplar

- P. fastigiata.** Lombardy Poplar. The well-known pyramidal variety, quick grower, highly effective on a ridge or elevation. 8 to 10 ft., \$2.00 each; 10 to 12 ft., \$3.00 each.
- P. monilifera.** Carolina Poplar. A very quick grower, valuable where immediate effect is desired, or for screens. 8 to 10 ft., \$1.50 each; 10 to 12 ft., \$2.00 each.



QUERCUS. Palustris

Deciduous Shade and Ornamental Trees

QUERCUS. Oak

- Q. alba.** White Oak. One of the finest American trees, lobed, pale green above, whitish below. 6 to 8 ft., \$6.00 each; 8 to 10 ft., \$8.00 each.
- Q. coccinea.** Scarlet Oak. Native tree of rapid pyramidal growth, bright red foliage in Autumn. 6 to 8 ft., \$4.00 each; 8 to 10 ft., \$6.00 each.
- Q. palustris.** Pin Oak. Deep green, finely divided leaves; excellent for street or lawn planting. 6 to 8 ft., \$4.00 each; 8 to 10 ft., \$6.00 each.
- Q. rubra.** Red Oak. Large native tree, hardy and rapid in growth. Purplish-red in Autumn. 6 to 8 ft., \$5.00 each; 8 to 10 ft., \$7.00 each.

SALISBURIA. Ginkgo or Maidenhair-tree

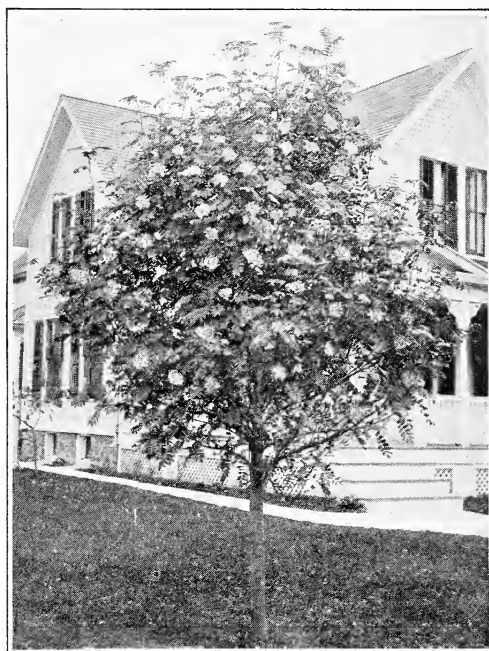
- S. adiantifolia.** Ginkgo, or Maidenhair-tree. Japanese tree of distinctive habit, with wedge-shaped leaves like the Maidenhair Fern; hardy. 6 to 8 ft., \$4.00 each; 8 to 10 ft., \$5.00 each.

SALIX. Willow

- S. babylonica.** Weeping Willow. A familiar and graceful tree. 6 to 8 ft., \$2.00 each; 8 to 10 ft., \$3.00 each.
- S. elegantissima.** Thurlow's Weeping Willow. More spreading in habit than *Babylonica*, branches long and pendant, considered very hardy. 6 to 8 ft., \$2.00 each; 8 to 10 ft., \$3.00 each.
- S. pentandra.** Laurel-leaved Willow. Large, shining leaves, quick grower, hardy and luxuriant, very useful. 4 to 6 ft., \$1.50 each; 6 to 8 ft., \$2.00 each.
- S. vitellina aurea.** Golden Willow. Handsome tree, with yellow bark; very effective in Winter. 4 to 6 ft., \$1.50 each; 5 to 6 ft., \$2.00 each.
- S. vitellina britzensis.** Bark bright red in Winter; very attractive. 4 to 6 ft., \$1.50 each.



SALIX. Willow



SORBUS. *Aucuparia*—(See page 6)

SORBUS

- S. aucuparia.** European Mountain Ash. Hardy tree, covered from July until Winter with bright scarlet berries. 6 to 8 ft., \$3.00 each; 8 to 10 ft., \$4.00 each.

TILIA. Linden or Lime

- T. americana.** American Linden. A fine native tree with large leaves and creamy yellow, fragrant flowers; rapid grower. 8 to 10 ft., \$4.00 each; 10 to 12 ft., \$6.00 each.
- T. europaea.** European Linden. Small leaves; a moderate grower. 6 to 8 ft., \$3.50 each; 8 to 10 ft., \$4.00 each.

ULMUS. Elm

- U. americana.** American Elm. The finest native tree for street and general planting, noble in growth and assuming many forms. 8 to 10 ft., \$6.00 each; 10 to 12 ft., \$7.00 each.
- U. moline.** Moline Elm. A remarkable new variety of extremely strong growth and large handsome deep grain foliage. Very desirable. 6 to 8 ft., \$22.00 per 10; 8 to 10 ft., \$30.00 per 10; 10 to 12 ft., \$50.00 per 10.
- U. ulmus.** Vase shape. This is the typical spreading elm which has been selected for its splendid characteristics. Large foliage. Straight clean stem, quick growth and uniform in shape. 6 to 8 ft., \$22.00 per 10; 8 to 10 ft., \$30.00 per 10.

Evergreen Trees

ABIES. Fir

- A. concolor.** Colorado Silver Fir. Regarded as the finest Rocky Mountain evergreen, foliage bluish above, silvery beneath; habit of tree stately. 2 to 2½ ft., \$8.00 each; 3 ft., \$12.00 each.
- A. douglasi.** Douglas Spruce. Horizontally spreading branches, conical form, light green leaves, glaucous beneath. 2 ft., \$6.00 each; 3 ft., \$10.00 each.

BIOTA. Arborvitae

- B. aurea conspicua.** Goldspire Arborvitae. Golden yellow in Spring. 1½ to 2 ft., \$30.00 per 10; 2 to 2½ ft., \$50.00 per 10.
- B. orientalis.** Chinese Arborvitae. Pyramidal growth, bright green foliage. 2 ft., \$35.00 per ten.

CRYPTOMERIA

- C. lobbi compacta.** Cave Cryptomeria. Forms narrow irregular column-compact and picturesque. Rich bronze winter color. Prefers moist but well drained location. 2½ to 3 ft., \$62.00 per 10; 3 to 4 ft., \$80.00 per 10.

JUNIPERUS. Juniper

- J. aurea variegata.** Golden variegated Juniper. Attractive. 12 to 15 in., \$20.00 per 10; 15 to 18 in., \$27.00 per 10.
- J. burki.** Burk's Juniper. Distinct blue, forming a dense column. 2 to 2½ ft., \$52.00 per 10; 3 to 4 ft., \$85.00 per 10.
- J. canadensis.** Canada Juniper. Forms low vase-shaped bush. Leaves dark green above, bluish beneath. Very hardy. 1½ to 2 ft., \$27.00 per 10; 2 to 3 ft., \$32.00 per 10.
- J. cannarti.** Cannart Cedar. Very deep rich blackish green foliage. Dense growing columnar form. An aristocrat. 3 to 4 ft., \$82.00 per 10; 4 to 5 ft., \$105.00 per 10.
- J. communis aurea.** Golden common Juniper. Low spreading habit. Golden foliage, bright in spring. Difficult to transplant. 15 to 18 in., \$30.00 per 10.
- J. communis.** Common Juniper, sometimes becoming a tree; spreading branches dark green, sometimes glaucous, bluish fruit, 18 to 24 in., \$3.00 each; 2 ft., \$4.00 each.
- J. depressa plumosa.** Plumed spreading Juniper. New, exceedingly hardy, transplants readily, assumes purple color in winter. 1½ to 2 ft., \$47.00 per 10; 2 to 2½ ft., \$62.00 per 10; 2½ ft., \$70.00 per 10.
- J. douglasi.** Waukegan Juniper. Long branches trailing along ground. Steely-blue foliage. A splendid ground cover, also effective among rock. Distinct purple hue in winter. 12 to 15 in., \$18.00 per 10; 15 to 18 in., \$25.00 per 10.
- J. excelsa stricta.** A rapid grower. 12 in., \$3.00 each; 15 in., \$4.00 each.
- J. glauca (alpine).** Blue Creeping Savin. Much neater habit and generally more desirable than the old green form. The steely blue color as-

sumes purple tints in winter. Very hardy. 1½ to 2 ft., \$32.00 per 10; 2 to 2½ ft., \$40.00 per 10.

- J. glauca.** Silver Redcedar. Distinct bluish-gray foliage. Develops into a tall narrow column. A most popular form. 2 to 2½ ft., \$52.00 per 10; 3 to 4 ft., \$82.00 per 10.
- J. hibernica.** Narrow columnar form, upright branches, deep green, tips of shoots erect. 2 ft., \$3.00 each; 3 ft., \$5.00 each.
- J. horizontalis (sabina prostrata).** Creeping Savin. Branches trail along ground. Good for rock and ground covering. 15 to 18 in., \$22.00 per 10; 1½ to 2 ft., \$27.00 per 10; 2 to 2½ ft., \$32.00 per 10.
- J. japonica.** Japanese Juniper. Slow grower, strong plants, dark green scaly leaves, adapted to rock planting and foundation work. One of the hardiest evergreens retaining its rich green throughout the winter. 15 to 18 in., \$27.00 per 10; 1½ to 2 ft., \$42.00 per 10.
- J. keteleeri.** A splendid evergreen of pyramidal formal outline. Deep green scale like leaves. Compact habit. Very hardy. 3 to 4 ft., \$85.00 per 10; 4 to 5 ft., \$105.00 per 10.
- J. kosteriana.** Koster Cedar. Spreading bushy form similar in color and general appearance to Pfitzer juniper but lower. 1½ to 2 ft., \$42.00 per 10; 2 to 2½ ft., \$57.00 per 10.
- J. neaboriensis.** Conical Chinese Juniper. Very formal narrow pyramid. Prickly leaves. Useful accent plant—very hardy. 1½ to 2 ft., \$30.00 per 10; 2 to 2½ ft., \$48.00 per 10; 2½ to 3 ft., \$55.00 per 10.



PICEA. Kosteriana

Evergreen Trees



PFITZER'S Juniper—(See page 8)

- J. oblonga.** Forms broad irregular pyramid with feathery branches. Grayish foliage shaded purple in winter. Distinct. 1½ to 2 ft., \$30.00 per 10; 2 to 2½ ft., \$47.00 per 10; 2½ to 3 ft., \$60.00 per 10.
- J. pfitzeriana.** A most graceful evergreen, blue-green foliage, spreading form, usually branching out and as broad as they are high; a fine tree for border planting. 1½ to 2 ft., \$4.00 each; 2 ft., \$6.00 each; 2½ ft., \$8.00 each.
- J. sargentii.** Sargent Juniper. Prostrate habit, grass-green foliage. A very hardy valuable ground cover and rock plant. 15 to 18 in., \$50.00 per 10; 1½ to 2 ft., \$60.00 per 10.
- J. sabina.** Savin. Dense dark green foliage. Spreading branches forming irregular vase-shaped bush. Good throughout winter. 12 to 15 in., \$26.00 per 10; 1½ to 2 ft., \$37.00 per 10; 2 to 2½ ft., \$42.00 per 10.
- J. schottii.** Schott Redcedar. Has fresh green foliage. Compact formal columnar habit. Good winter color, quite hardy. 2 to 3 ft., \$65.00 per 10; 3 to 4 ft., \$85.00 per 10.
- J. suecica.** Swedish Juniper. A small, handsome pyramidal tree, yellowish green foliage. 15 to 18 in., \$2.50 each; 2 ft., \$3.00 each.
- J. virginiana elegantissima.** Goldtip Redcedar. Bright yellow tips to branches turning bronze in winter. Pyramidal. 2 to 2½ ft., \$5.50 per 10; 3 to 4 ft., \$10.00 per 10.
- J. virginiana.** Red Cedar. A familiar native tree with dark green foliage and blue berries, makes a good hedge. 3 to 4 ft., \$6.00 each; 4 to 5 ft., \$8.00 each.
- J. viridis.** A light green form slightly slower in growth. 3 to 4 ft., \$100.00 per 10; 4 to 5 ft., \$120.00 per 10.

PICEA. Spruce

- P. alba.** White Spruce. Silvery gray foliage, light colored bark; pyramidal form. 2 ft., \$4.00 each; 3 ft., \$6.00 each.

- P. aurea.** Golden Norway Spruce. Best form of Golden Spruce. 3 to 4 ft., \$15.00 each.
- P. conica.** Arrowhead Norway Spruce. Grows slowly; compact, symmetrical. Good for foundation or formal work. 18 to 21 in., \$50.00 per 10; 21 to 24 in., \$60.00 per 10.
- P. excelsa.** Norway Spruce. Rapid growing pyramidal tree, lively green, branches droop gracefully as the tree attains size. Excellent in masses for windbreaks, hedges, or as single specimens. 2 ft., \$3.00 each; 3 ft., \$5.00 each.
- P. kosteri.** Koster Blue Spruce. Dense blue color. Very hardy and attractive. 2½ to 3 ft., \$25.00 each; 3 to 3½ ft., \$30.00 each; 3½ to 4 ft., \$35.00 each; 4 to 4½ ft., \$40.00 each.
- P. koyams.** Forms an attractive narrow pyramidal tree, gray-green foliage. 1½ to 2 ft., \$50.00 per 10; 2 to 2½ ft., \$70.00 per 10.
- P. pungens.** Colorado Spruce. The original Colorado Blue Spruce. The foliage is sometimes blue, occasionally green, a strong grower, hardy and is a beautiful tree. 2 to 2½ ft., \$6.00 each; 3 ft., \$8.00 each.
- P. pungens glauca.** Colorado Blue Spruce. Thick steel blue needles. 2 to 2½ ft., \$10.00 each; 2½ ft., \$12.00 each.

PINUS. Pine

- P. austriaca.** Austrian Pine. Very robust, hardy and spreading, long, stiff, dark green leaves, rapid grower; good for seashore planting. 2 ft., \$5.00 each; 3 ft., \$8.00 each.
- P. mughus.** Dwarf Mugho Pine. A small, compact grower, usually forming a picturesque dwarf bush, dense deep green. 12 in., \$4.00 each; 18 in., \$7.00 each; 24 in., \$10.00 each.
- P. densiflora.** Japanese Red Pine. Long bright green needles. Succeeds well at seashore—grows quickly, bushy plants. 2 to 3 ft., \$35.00 per 10; \$300.00 per 100.
- P. umbraculifera. (Tanyosho).** Japanese umbrella Pine. A dwarf variety in which the branches form a flat-topped table-like bush. A handsome and useful dwarf evergreen. 12 to 15 in., \$45.00 per 10; 15 to 18 in., \$60.00 per 10.
- P. resinosa.** Red Pine. Dark green stiff needles, vigorous. 2 to 3 ft., \$45.00 per 10; \$400.00 per 100; 3 to 4 ft., \$60.00 per 10; \$550.00 per 100.
- P. strobus.** White, or Weymouth Pine. Light, silvery green foliage, picturesque growth, grows well on poor, sandy soil, very hardy. 2 ft., \$4.00 each; 3 ft., \$7.00 each.
- P. sylvestris.** Scotch Pine. Robust, rapid grower, erect habit, silvery green foliage, excellent for shelter or windbreak. 2 ft., \$4.00 each; 3 ft., \$6.00 each.

RETINOSPORA. Japan Cypress

- R. compacta.** Football Cypress. Almost spherical in shape. Good green during winter—useful in foundation planting. 12 to 15 in., \$20.00 per 10; \$150.00 per 100; 15 to 18 in., \$30.00 per 10; \$250.00 per 100; 1½ ft., \$40.00 per 10.

Evergreen Trees

- R. crippei.** Cripps Golden Cypress. Particularly good golden leaved form. Slow growing—hardy. Bright yellow all year. 15 to 18 in., \$45.00 per 10; 1½ to 2 ft., \$55.00 per 10.
- R. gracilis.** Slender Hinoki Cypress. Narrow irregular pyramid, rich dark green foliage. Slow grower—picturesque. 15 to 18 in., \$35.00 per 10; 1½ to 2 ft., \$40.00 per 10.
- R. filifera.** Loosely pyramidal bush or small tree; very feathery drooping foliage, dark green. 1½ to 2 ft., \$5.00 each.
- R. filifera aurea.** A golden form of the preceding, making a very handsome lawn specimen, 1½ to 2 ft., \$6.00 each.
- R. obtusa.** Dwarf and rounded, very dense, spreading bright green leaves; grows to a height of 30 ft. 12 to 15 in., \$4.00 each; 2 to 2½ ft., \$6.00 each.
- R. obtusa gracilis compacta.** Compact Hinoki Cypress. Very slow and compact grower. Roughly pyramidal. 1½ to 2 ft., \$5.00 each; 2 to 2½ ft., \$6.00 each.
- R. pisifera.** Sawara Cypress. Horizontal, flattened branches, somewhat pendulous, bright green, making a large shrub of graceful habit. 18 in., \$3.00 each; 2 ft., \$4.00 each; 3 ft., \$8.00 each.
- R. pisifera aurea.** Golden Pea-fruited Japan Cypress. Yellow foliage; a beautiful specimen. 18 in., \$3.00 each; 2 ft., \$5.00 each; 3 ft., \$8.00 each.
- R. plumosa.** Dense, conical habit, slender feathery branchlets; bright green. Can be pruned into a compact specimen, or formed into a broad garden hedge of unusual beauty. 18 in., \$3.00 each; 2 ft., \$5.00 each; 3 ft., \$8.00 each.
- R. plumosa aurea.** Golden Japanese Cypress. Young growths golden yellow, and extremely showy form, making a fine specimen. 1½ ft., \$3.00 each; 2 ft., \$5.00 each; 3 ft., \$8.00 each.
- R. plumosa lutescens.** Dwarf Yellow Plume Cypress. 12 to 15 in., \$2.50 each; 15 to 18 in., \$4.00 each; 2 ft., \$7.00 each.
- R. squarrosa veitchi.** Exceedingly dense and bushy with spreading, feathery branches; steel blue, very handsome, 1½ ft., \$4.00 each; 2 ft., \$5.00 each; 3 ft., \$8.00 each.
- R. youngi.** Young Golden Cypress. Graceful loose habit, light yellow foliage on outside of bush. A handsome tree. 2 to 2½ ft., \$45.00 per 10; 3 to 3½ ft., \$80.00 per 10; 4 to 5 ft., \$15.00 each.

TAXUS. Yew

- T. baccata.** English Yew. Large, bushy tree; very dense, dark green, can be trimmed in any shape. 15 to 18 in., \$6.00 each; 18 to 24 in., \$7.00 each.
- T. brevifolia.** Japanese Yew. Leaves short and dark green. A handsome tree. 12 to 15 in., \$5.00 each; 1½ to 2 ft., \$9.00 each.
- T. canadensis.** Canadian Yew. Low spreading and bushy dark green foliage and bright red berries. Hardy. 12 in., \$4.00 each; 18 in., \$6.00 each.
- T. cuspidata.** Japanese Yew. Dense habit, dark green foliage, lighter beneath, branches ascending; hardiest of Yews. 15 in., \$5.00 each; 18 in., \$7.00 each; 2 ft., \$10.00 each.
- T. washingtoni.** Golden Yew. Has attractive yellow foliage. 12 to 15 in., \$35.00 per 10; 15 to 18 in., \$45.00 per 10.

THUJA. Arborvitae

- T. canadensis.** Canadian Hemlock. Most graceful and adaptable. Useful as clipped hedge or informal planting. 2 to 2½ ft., \$50.00 per 10; \$450.00 per 100; 2½ to 3 ft., \$70.00 per 10; \$600.00 per 100; 3 to 3½ ft., \$85.00 per 10; \$800.00 per 100; 3½ to 4 ft., \$100.00 per 10; \$900.00 per 100; 4 to 5 ft., \$125.00 per 10.
- T. compacta.** Dwarf and compact, with deep green foliage. 12 in., \$2.50 each; 18 in., \$4.00 each.
- T. douglasi aurea.** Douglas Golden Arborvitae. A broad pyramid with golden-green foliage. Vigorous. Quite hardy. 1½ to 2 ft., \$25.00 per 10; 2 to 2½ ft., \$35.00 per 10; 3 to 4 ft., \$60.00 per 10.
- T. elegantissima (BIOTA).** Yellow Column Arborvitae. Assumes rich deep golden bronze color in winter—handsome. 2 to 2½ ft., \$50.00 per 10; 3 to 4 ft., \$80.00 per 10.
- T. elegantissima.** Golden Tipped Arborvitae. Branches in Spring tipped with yellow. Rich lustrous green otherwise. 1½ ft., \$3.00 each; 2 ft., \$5.00 each; 3 ft., \$8.00 each.
- T. lobbi atrovirens (plicata).** Rich shining deep green fleshy leaves. 2 to 2½ ft., \$40.00 per 10; 2½ to 3 ft., \$50.00 per 10; 3 to 4 ft., \$60.00 per 10.



RETINOSPORA. pisifera

Evergreen Trees



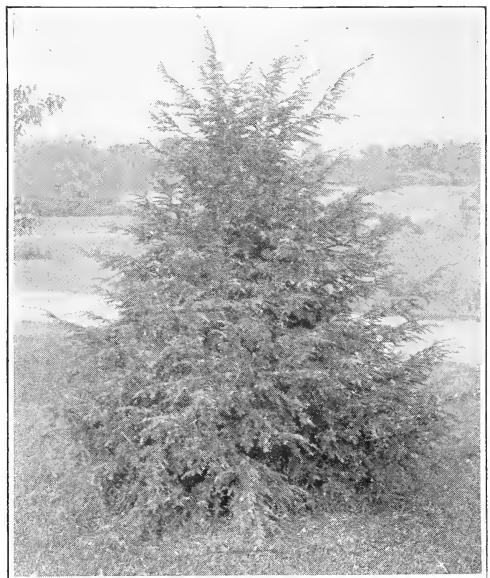
THUGA. Sibirica

- T. nana aurea (BIOTA).** Berekman Golden Arborvitae. A gem for dwarf planting—compact roundish shape, warm golden yellow foliage. Especially good for formal work and edging. 12 in., extra bushy, \$25.00 per 10; \$200.00 per 100; 12 to 15 in., \$30.00 per 10; \$250.00 per 100; 18-21 in., \$50.00 per 10.
- T. riversi.** Rivers Arbor Vitae. A distinct and vigorous arbor vitae forming a shapely broad pyramid of rich bright green. 2 to 2½ ft., \$35.00 per 10; 2½ to 3 ft., \$45.00 per 10; 3 to 4 ft., \$55.00 per 10.
- T. rosenthali.** Rosenthal Arborvitae. Dense rugged columnar form. Slow grower—good green in winter. Perfectly hardy. 2 to 2½ ft., \$45.00 per 10; 3 to 4 ft., \$60.00 per 10.
- T. standishi.** Standish Arborvitae. Has fleshy scale-like leaves and course growth. Assumes bronze tones in winter. Hardv. 2 to 2½ ft., \$45.00 per 10; 2½ to 3 ft., \$60.00 per 10; 3 to 3½ ft., \$70.00 per 10.
- T. umbraculifera.** Umbrella Arborvitae. Particularly good—low mushroom shaped form, rich green foliage. 12 to 15 in., \$25.00 per 10; 15 to 18 in., \$30.00 per 10; 18 to 24 in., \$40.00 per 10.
- T. globosa.** Dwarf, rounded form, bright green; handsome. 12 to 15 in., \$3.00 each; 15 to 18 in., \$4.00 each; 18 to 24 in., \$5.00 each.
- T. hoveyi.** Dwarf, dense, rounded oval form, light green, shading to yellow on young growth. 12 in., \$2.00 each; 18 in., \$3.00 each.

- T. lutea.** Geo. Peabody Arborvitae. Conspicuous golden yellow form—columnar outline. A distinctive lawn plant. 1½ to 2 ft., \$4.00 each; 2 to 2½ ft., \$5.00 each; 2½ to 3 ft., \$6.00 each.
- T. occidentalis.** Arborvitae, or White Cedar. Short, horizontal branches forming a narrow pyramid, bright green, very hardy, rapid grower, submits to close shearing and endures any soil. 2 ft., \$3.00 each; 2½ ft., \$4.00 each; 3 ft., \$5.00 each; 4 ft., \$7.00 each.
- T. occidentalis pyramidalis.** Pyramidal Arborvitae. A pyramidal form of the Asiatic Arborvitae. Bright green foliage; one of the tallest and hardiest varieties. 2 ft., \$4.00 each; 2½ ft., \$5.00 each; 3 ft., \$7.00 each; 4 ft., \$9.00 each.
- T. occidentalis sibirica.** Siberian Arborvitae. Pyramidal habit, rich green, keeping color well through Winter. Excellent for screens and wind-breaks. 18 in., \$3.00 each; 2 ft., \$4.00 each.
- T. plicata (Douglasi Pyramidalis).** Moss Arborvitae. Rich deep blue-green foliage. Short stiff fern-like branches give pleasing effect in light and shade. Formal slender pyramid—hardy. 1½ to 2 ft., \$3.00 each; 2 to 2½ ft., \$4.00 each; 3 to 4 ft., \$7.50 each; 4 ft., \$9.00 each.

TSUGA. Hemlock

- T. caroliniana.** Carolina Hemlock. A particularly fine evergreen. One of the best of Hemlocks. 2 to 3 ft., \$8.00 each; 3 to 4 ft., \$10.00; 4 to 5 ft., \$15.00 each.
- T. canadensis.** Common Hemlock, or Hemlock Spruce. A rapid grower and hardy, which can be sheared into a bushy form; makes a fine hedge. Good for seashore planting. 2 ft., \$6.00 each; 3 ft., \$9.00 each; 4 ft., \$13.00 each.



TSUGA. Canadensis

Evergreen Shrubs

AZALEA

- A. **amoena**. A Chinese Azalea; very dwarf and bushy, covered with dark red flowers in May, abundant small leaves, persisting all Winter, turning reddish brown in Autumn. 10 to 12 in., \$3.00 each; 12 to 15 in., \$4.00 each.
- A. **amoena var. hinodegiri**. Resembles *amoena* in growth, flowers are larger and more brilliant, color a bright red or carmine-pink. 8 to 10 in., \$3.00 each; 10 to 12 in., \$4.00 each; 12 to 15 in., \$5.00 each.

BUXUS. Box

- B. **sempervirens**. Box (Bush form). 10 to 12 in. bushy, \$15.00 per 10; 12 to 15 in. bushy, \$22.00 per 10; 15 to 18 in., \$25.00 per 10; 1½ to 2 ft., \$50.00 per 10.
- B. **suffruticosa**. Dwarf Box. A dwarf form with small, oval leaves, good for edging. 4 in., \$40.00 per 100; 6 in., \$60.00 per 100.

COTONEASTER

- C. **franchetti**. Franchet Cotoneaster. Large dark green leaves, open habit. Bright orange berries; quick grower. \$15.00 per 10.
- C. **horizontalis**. Small-leaved Cotoneaster. Trailing shrub with small leaves, white flowers followed by red berries. \$15.00 per 10.
- C. **microphylla**. 10 in., \$12.00 per 10.
- C. **perpusilla**. Has very small leaves; procumbent habit. Red berries. \$12.00 per 10.
- C. **simonsi**. Simon's Cotoneaster. Open growth; attractive foliage; black fruits. Evergreen in sheltered locations. \$12.00 per 10.
- C. **thymifolia**. Thyme Rockspray. Very small leaves, bushy. \$12.00 per 10.

KALMIA. Laurel

NURSERY GROWN

- K. **latifolia**. Among the most beautiful of all flowering evergreens is the American Laurel. The foliage is very decorative, the ordinary *Kalmia latifolia* being almost covered with its showy, flesh pink flowers. The *Kalmia* requires the same conditions as the *Rhododendrons*. 12 to 15 in., \$20.00 per 10; 15 to 18 in., \$30.00 per 10; 1½ to 2 ft., \$35.00 per 10; 2 to 3 ft., \$40.00 per 10.

DAPHNE

- D. **cneorum**. Trailing Daphne. Dwarf trailing plant, with evergreen leaves and fragrant, pink or white flowers in early Spring. 6 to 8 in., \$20.00 per 10; 8 to 10 in., \$25.00 per 10; 10 to 12 in., \$30.00 per 10.

EUONYMUS

- E. **japonicus**. Upright shrub with narrow evergreen leaves, pinkish fruit. 8 to 10 in., \$1.50 each; 12 to 15 in., \$15.00 per 10.

ILEX. Holly

- I. **crenata**. Japanese Holly. Shining leaves, waxy at the edge, much harder than the English Holly, very desirable for hedges, and also for lawn specimens. 1½ to 2, \$40.00, per 10; 2 to 2½, \$50.00, per 10.



THUGA. *Pyramidalis*—(See page 10)

- I. **opaca**. American Holly. Succeeds in moist, partially shaded place. Rather difficult to transplant. Best moved in spring. 2½ to 3 ft., \$10.00 each; 3 to 4 ft., \$15.00 each; 4 ft., \$20.00 each.

Evergreen Shrubs

MAHONIA

M. aquifolium. Oregon Holly Grape. Shining green leaves turn rich scarlet in Autumn. Striking in May when yellow flowers appear—blue-black fruits. Best in half shade. 12 to 15 in., \$25.00 per 10; 15 to 18 in., \$30.00 per 10; 1½ to 2 ft., \$35.00 per 10.

PIERIS

P. japonica. Japanese Andromeda. Thick shiny leaves turning bronze in winter. Drooping clusters of small white flowers open in May. Best in moist, partially shaded places. Hardy. 12 to 15 in., \$30.00 per 10; 15 to 18 in., \$35.00 per 10; 1½ to 2 ft., \$45.00 per 10.

PYRACANTHA

P. coccinea lalandi. Laland Firethorn. Small dark green leaves; upright branches with few laterals. Small white flowers followed by large clusters of bright orange berries. Best with slight shelter. 4 in. pots, \$25.00 per 10.

RHODODENDRONS

R. maximum. Both nursery grown and collected plants of white flowers. 1 to 6 ft. Send for folder and price.



MUGHO PINE



NORWAY SPRUCE

- R. caroliniana.** Pink flower, plants 1 to 4 ft. Send for price list.
R. catawbiense. Color of flower a deep pink slightly tinted with lavender, flower of immense size and perfectly hardy, collected plants from 1 to 4 ft. Write for price.

HYBRID RHODODENDRONS

Varieties and sizes as follows: Caractacus. A good bright red. Charles Bagley. Deep scarlet. F. D. Godman. Red. Lady Gray Egerton. Soft lavender pink. Parson's grandiflorum. Rose purple. 15 to 18 in., \$8.00 each; 1½ to 2 ft., \$10.00 each; 2 to 2½ ft., \$13.00 each; 2½ to 3 ft., \$16.00 each.

WRITE FOR PRICE LIST

Deciduous Shrubs

ABELIA

- A. **grandiflora**. A beautiful shrub with pink flowers, Leaves turn a deep red in Fall. 18 to 24 in., \$12.00 per 10; 2 to 3 ft., \$20.00 per 10.

AMORPHA. False-indigo

- A. **fruticosa**. False-indigo. Hairy shrub, dense panicles of dark purple flowers in June and July. 2 to 3 ft., \$7.00 per 10; 3 to 4 ft., \$8.00 per 10.

AMYGDALUS. Almond

- A. **Double White and Pink-flowering Almond**. Long drooping branches of beautiful double white and pink flowers in May. 2 to 3 ft., \$9.00 per 10; 3 to 4 ft., \$10.00 per 10.

ARALIA. Angelica-tree

- A. **pentaphylla**. Angelica Tree. Pretty shrub with five-lobed pale green leaves; spiny. 2 ft., \$6.00 per 10; 3 ft., \$9.00 per 10.

ARONIA

- A. **arbutifolia**. Red Chokeberry. Valuable because of its red berries. Succeeds in moist half-shade. 1 to 2 ft., \$9.00 per 10; 2 to 3 ft., \$12.00 per 10; \$90.00 per 100.
- A. **melanocarpa (nigra)**. Black Chokeberry. Delicate white flowers in May. Blackberries persist until late. Healthy shrub. 1½ to 2 ft., \$8.00 per 10; \$53.00 per 100; 2 to 3 ft., \$9.00 per 10; \$65.00 per 100; 3 to 4 ft., \$11.00 per 10; \$85.00 per 100.

AZALEA

- A. **arborescens**. Sweet Azalea. Fragrant white flowers. June. 1½ to 2 ft., B&B \$37.00 per 10; 2 to 2½ ft., B&B \$47.00 per 10.
- A. **indica alba**. Evergreen. Large single white flowers, freely produced. Makes a striking background for Azalea hinodegiri. 12 to 15 in., B&B \$32.00 per 10; \$255.00 per 100; 15 to 18 in. B&B \$38.00 per 10; \$310.00 per 100.
- A. **indica lilacina**. Evergreen. A beautiful addition to the indica type with very large individual flowers of pure lilac color. 12 to 15 in. B&B \$35.00 per 10; 15 to 18 in. B&B \$37.00 per 10.
- A. **kaempferi**. Torch Azalea. Warm brick-red flowers. May. Very hardy and desirable. 12 to 15 in B&B \$30.00 per 10; \$265.00 per 100; 15 to 18 in B&B \$45.00 per 10; \$380 per 100; 18 to 24 in. B&B \$50.00 per 10; \$410.00 per 100.
- A. **macrantha**. Red Salmon Azalea. Evergreen. A beautiful plant, with large flowers that appear at intervals, and not at one time like the single and double varieties. 10 to 12 in. B&B \$25.00 per 10; \$205.00 per 100; 12 to 15 in. B&B \$30.00 per 10; \$260.00 per 100; 15 to 18 in. B&B \$35.00 per 10.

- A. **mollis**. Chinese Azalea. Largely of orange color. 12 to 15 in., \$3.00 each; 15 to 18 in., \$4.00 each; 18 to 24 in., \$5.00 each.

- A. **yodogawa**. Yodogawa Azalea. Double pinkish-lavender flowers in May. Quite hardy and of exceptional merit. Bushy habit. 12 to 15 in., \$25.00 per 10; 1½ to 2 ft., \$45.00 per 10.

BACCHARIS. Groundselbush

- B. **halimifolia**. Groundselbush. Dark green foliage, fluffy white seed pods in Autumn, fine for sea-side planting. 2 to 3 ft., \$7.50 per 10; 3 to 4 ft., \$9.00 per 10.

BENZOIN. Wild Allspice

- B. **odoriferum**. Wild Allspice. Yellow flowers in Spring, oval leaves, bright red berries, persisting through Winter. 2 to 2½ ft., \$10.00 per 10; 3 to 4 ft., \$20.00 per 10.



YUCCA. Filamentosa

Deciduous Shrubs

BERBERIS. Barberry

- B. macracantha.** Bighthorn Barberry. Has pleasing foliage and flat thorns, grows freely. Red fruits, slender spreading branches. 1½ to 2 ft., B&B \$10.00 per 100.
- B. minor.** Box Barberry. A dwarf compact Japanese barberry. Used effectively as small trimmed edging. Hardy and useful. 9 to 12 in., \$5.00 per 10; \$37.00 per 100; 12 to 15 in., \$7.00 per 10; \$55.00 per 100.
- B. sieboldi.** Siebold Barberry. Handsome—leaves purplish red when young, vinous red in Autumn—bright red fruit all winter. 1½ to 2 ft., B&B \$12.00 per 10.
- B. thunbergi.** Thunberg's Barberry. Dwarf, compact growth, small foliage, turning a rich red in Autumn. Valuable as a hedge plant. 18 to 24 in., \$5.00 per 10, \$35.00 per 100; 2 to 2½ ft., \$6.00 per 10, \$40.00 per 100.
- B. vulgaris purpurea.** Purple-leaved Barberry. Foliage and fruit violet-purple, very handsome. 2 to 3 ft., \$6.00 per 10; 3 to 4 ft., \$9.00 per 10.

BUDDLEIA

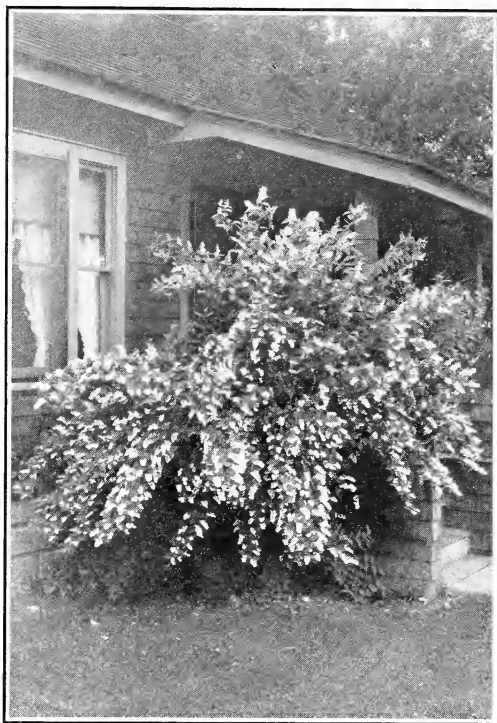
- B. veitchi.** An improved variety, similar in its growth, but has finer flowers, larger spikes, more dense and brilliant violet in color with orange yellow center, 18 to 24 in., \$6.00 per 10, 2 to 3 ft., \$7.00 per 10.

CALLICARPA. French Mulberry

- C. purpurea.** Purple Callicarpa. Dwarf shrub, with small purple flowers in August and September. 1½ to 2 ft., \$6.00 per 10; 2 to 2½ ft., \$8.00 per 10.



AZALEA. Amoena—(See page 11)



DEUTZIA—Pride of Rochester

CALLUNA

- C. vulgaris alba.** White heather. A splendid evergreen ground cover. Best in large masses on well-drained slopes. 3-in. pots, \$10.00 per 10; \$80.00 per 100.
- C. alporti.** Alport Heather. Rosy-carmine flower. August. 3-in. pots, \$10.00 per 10; \$75.00 per 100.
- C. humilis.** Dwarf Heather. White flowers. Rich green foliage. 3-in. pots, \$10.00 per 10; \$75.00 per 100.

CALYCANTHUS. Carolina Allspice

- C. floridus.** Carolina Allspice. Sweet-scented shrub. Chocolate-colored flowers in May; glossy, dark leaves. Both flowers and twigs have a rich, aromatic fragrance, very hardy and desirable. 2 to 3 ft., \$8.00 per 10; 3 to 4 ft., \$10.00 per 10.

CARYOPTERIS. Blue Spirea

- C. mastacanthus.** Low shrub, producing profuse clusters of fragrant blue flowers from September to frost; very handsome. 12 to 15 in., \$6.00 per 10.

CEANOTHUS. Jersey-tea

- C. americana.** Jersey-tea, or Red Root. Dwarf shrub bearing white flowers profusely in June; does well in shade. 12 to 18 in., \$6.00 per 10; 1½ to 2 ft., \$8.00 per 10.

Deciduous Shrubs



KALMIA. Laurel

CHIONANTHUS. White Fringe

- C. virginica.** White Fringe. Large, dark green leaves, long racemes of fringe-like flowers in May; purple fruit in the Fall; very desirable. 18 to 24 in., \$10.00 per 10; 2 to 3 ft., \$15.00 per 10; 3 to 4 ft., \$20.00 per 10.

CLETHRA. Sweet Pepperbush

- C. alnifolia.** Native shrub with small spikes of fragrant white flowers in July; low, dense growth. 2 to 2½ ft., \$9.00 per 10; 3 to 4 ft., \$12.00 per 10.

COLUTEA. Bladder-senna

- C. arborescens.** Tall shrub with fine Acacia-like leaves; yellow flowers in June, followed by round, reddish pods. 2 to 3 ft., \$6.00 per 10; 3 to 4 ft., \$7.00 per 10.

CORNUS. Dogwood

- C. alba.** Red-twigged Dogwood. White flowers in June; bright red bark, making it conspicuous in Winter. 2 to 3 ft., \$6.00 per 10; 3 to 4 ft., \$7.00 per 10.
- C. alternifolia.** Pagoda Dogwood. Branches grow in irregular horizontal tiers making deep shadow effects. Blue-black fruit. 3 to 4 ft., \$12.00 per 10, \$85.00 per 100; 4 to 5 ft., \$15.00 per 10, \$130.00 per 100.
- C. amomum (sericea).** Silky Dogwood. Pale blue fruits—young twigs purple. Prefers moist places, has creamy white flowers. 2 to 3 ft., \$6.00 per 10; \$35.00 per 100; 3 to 4 ft., \$7.00 per 10; \$45.00 per 100.
- C. elegantissima.** Pale yellow flowers. 2 to 3 ft., \$8.00 per 10; 3 to 4 ft., \$10.00 per 10.
- C. lutea.** Golden Margined Dogwood. Leaves bordered with pale yellow, some entirely yellow. 2 to 3 ft., \$6.00 per 10; 3 to 4 ft., \$8.00 per 10.

- C. mascula.** Cornelian Cherry. Clusters of bright yellow flowers in Spring before leaves, followed by red berries; shining leaves, dense habit, 2 to 3 ft., \$15.00 per 10.

- C. paniculata.** Panicle Dogwood. Smooth bark, pointed white green leaves, whitish beneath, greenish white flowers; white fruit. 2 to 3 ft., \$6.00 per 10; 3 to 4 ft., \$9.00 per 10.

- C. stolonifera.** Wild Red Osier Dogwood. Native species of spreading habit, smooth, slender branches, dark red in Winter, 2 to 3 ft., \$6.00 per 10; 3 to 4 ft., \$7.00 per 10.

CYDONIA. Japanese Quince

- C. japonica.** Japan Quince. Brilliant crimson flowers; neat foliage; makes a fine hedge. 18 in., \$7.00 per 10; 2 to 3 ft., \$9.00 per 10.

DESMODIUM

- D. penduliflorum.** Low growing shrub with rose-purple flowers in September; dies down in Winter. 2 to 3 ft., \$7.00 per 10.

DEUTZIA

- D. candidissima.** A pure white form; free bloomer. 2 to 3 ft., \$6.00 per 10; 3 to 4 ft., \$8.00 per 10.
- D. crenata.** Double and single pink flowers. 2 to 3 ft., \$6.00 per 10; 3 to 4 ft., \$7.00 per 10.
- D. gracilis.** Dwarf shrub, a mass of graceful white flowers, about the middle of June, before the other Deutzias. 18 to 24 in., \$9.00 per 10.
- D. Pride of Rochester.** A hybrid of Crenata, double white tinged rose; long, graceful panicles. Blooms earlier than Crenata. 2 to 3 ft., \$6.00 per 10; 3 to 4 ft., \$7.00 per 10.
- D. lemoinei.** A hybrid of gracilis; dwarf and free flowering, single. 2 to 3 ft., \$8.00 per 10; 3 to 4 ft., \$10.00 per 10.

Deciduous Shrubs

DIERVILLA. Weigela

- D. **weigelia amabilis**. Rose Weigela. Light pink. 2 to 3 ft., \$5.00 per 10, \$30.00 per 100; 3 to 4 ft., \$7.00 per 10, \$40.00 per 100.
- D. **candida**. White-flowered Weigela. Creamy white flowers, freely produced in June; strong grower. 2 to 3 ft., \$6.00 per 10; 3 to 4 ft., \$7.00 per 10.
- D. **weigelia Desboisi**. Debois Weigela. Deep rose pink, flowers profusely. 2 to 3 ft., \$7.00 per 10, \$40.00 per 100; 3 to 4 ft., \$8.00 per 10, \$40.00 per 100.
- D. **Eva Rathke**. Flowers brilliant crimson, distinct from all others; a new variety. 1½ to 2 ft., \$7.00 per 10; 2 to 2½ ft., \$8.00 per 10.
- D. **weigelia floribunda**. Crimson weigela. Crimson, June. Free flowering. Particularly good clear color. 2 to 3 ft., \$7.00 per 10, \$40.00 per 100; 3 to 4 ft., \$9.00 per 10, \$60.00 per 100.
- D. **nan folis variegata**. Dwarf Variegated Weigela. Dwarf habit, leaves with silvery variegation; flowers nearly white. 18 to 24 in., \$6.00 per 10; 2 to 2½ ft., \$8.00 per 10.
- D. **rosea**. Rose-colored Weigela. Erect growth, abundant rose-colored flowers in June. 2 to 3 ft., \$6.00 per 10; 3 to 4 ft., \$8.00 per 10.



BERBERIS. Thunbergii—(See page 14)

ELAEAGNUS. Silver-Thorn

- E. **angustifolia**. Shrub or small tree of graceful habit, small yellow flowers, followed by oval, silvery yellow fruit. 2 to 3 ft., \$7.00 per 10; 3 to 4 ft., \$9.00 per 10.
- E. **longipes (Oleaster)**. Thin, oval leaves, long, drooping branches, small flowers, followed by drooping, oval fruit, which makes an excellent jelly. 2 to 3 ft., \$10.00 per 10; 3 to 4 ft., \$12.00 per ten.

EUONYMUS. Spindletree or Burningbush

- E. **alatus**. Cork-barked Spindletree. Dwarf habit, corky bark, small leaves turning bright red in Autumn; red fruit. 2 to 3 ft., \$12.00 per 10; 3 to 4 ft., \$15.00 per 10.
- E. **americana**. Strawberry Tree. Showy red berries. 2 ft., \$8.00 per 10; 3 to 4 ft., \$10.00 per ten.
- E. **europaeus**. European Spindletree. Large shrub or small tree, showy rose-colored fruit; in Autumn foliage reddens. 2 to 3 ft., \$8.00 per 10; 3 to 4 ft., \$10.00 per 10.

EXOCHORDA. Pearlbush

- E. **grandiflora**. Pearl-bush. Beautiful shrub with light green leaves and large sprays of white flowers in May. 2 to 3 ft., \$8.00 per 10; 3 to 4 ft., \$9.00 per 10.

FORSYTHIA. Goldenbell

- F. **fortunei**. Goldenbell. Upright growth, deep green leaves, showy yellow flowers in Spring. 2 to 3 ft., \$6.00 per 10; 3 to 4 ft., \$7.00 per 10.
- F. **intermedia**. Very similar to *suspensa*, hardy and very floriferous. 2 to 3 ft., \$6.00 per 10; 3 to 4 ft., \$7.00 per 10.
- F. **suspensa**. Weeping Goldenbell. Similar to *fortunei*, but with drooping branches; profuse yellow flowers. 2 to 3 ft., \$6.00 per 10; 3 to 4 ft., \$8.00 per 10.
- F. **viridissima**. Leaves and bark deep green, abundant yellow flowers early in Spring, very hardy. 2 to 3 ft., \$6.00 per 10; 3 to 4 ft., \$7.00 per 10.

HALESIA. Snowdrop Tree

- H. **tetraptera**. Four-winged Snowdrop Tree. Large shrub with bell-shaped white flowers in May. 2 to 3 ft., \$9.00 per 10; 3 to 4 ft., \$12.00 per 10.

HAMAMELIS. Witch-hazel

- H. **virginica**. Witch-hazel. Tall shrub with yellow flowers in autumn, just before the leaves fall. 2 to 3 ft., \$10.00 per 10; 3 to 4 ft., \$12.00 per 10.

HIBISCUS, Althaea, or Rose-of-Sharon

- H. **syriacus**. Althaea or Rose-of-Sharon. These handsome shrubs bloom in August and September, when other trees and shrubs are out of bloom. Very hardy and easily grown. Named varieties. 2 to 3 ft., \$6.00 per 10; 3 to 4 ft., \$9.00 per 10.

Deciduous Shrubs

HYDRANGEA

- H. arborescens sterilis forma nova.** Snowball Hydrangea, or Hills-of-snow. New. Snowball white blossoms of the largest size, lacking the coarseness of *H. paniculata grandiflora*; form of panicle is similar to *hortensis*. Most desirable on account of bloom after the early Spring shrubs, blooming from early June through August. 2 to 3 ft., \$8.00 per 10; 3 to 4 ft., \$9.00 per 10.
- H. paniculata.** Hardy Hydrangea. Elongated panicles of white single flowers in Summer, large leaves. 2 to 3 ft., \$8.00 per 10; 3 to 4 ft., \$10.00 per 10.
- H. paniculata grandiflora.** Large-panicled Hydrangea. One of the showiest of Summer blooming shrubs, huge elongated panicles of white flowers, turning rose-colored with age. 2 to 3 ft., \$8.00 per 10; 3 to 4 ft., \$10.00 per 10.
- H. New French Varieties.** In assorted varieties and colors of rose, white and pink. 12 to 15 in., \$15.00 per 10; 15 to 18 in., \$20.00 per 10.

HYPERICUM. St. Johnswort

- H. aureum.** Golden St. Johnswort. Upright in growth, with bright yellow flowers from July to October; very fine. 2 to 2½ ft., \$8.00 per 10; 2½ to 3 ft., \$9.00 per 10.
- H. densiflorum.** Bright yellow, July-September. Very free flowering. 1½ to 2 ft., \$7.00 per 10.
- H. henryi.** Henry Hypericum. Large flowers. July-August. 12 in., \$7.00 per 10; \$55.00 per 100; 15 in., \$8.00 per 10.

ILEX. Mountain Holly. Alder

- I. verticillata.** Black Alder. Glossy dark green leaves, white flowers; bright red berries in Fall. 1½ to 2 ft., \$7.00 per 10; 2 to 3 ft., \$9.00 per 10.

ITEA. Virginia Tea

- I. virginica.** Virginia Tea. Native shrub with pretty white flowers in June, foliage rich deep red in Fall. 1½ to 2 ft., \$8.00 per 10; 2 to 3 ft., \$10.00 per 10.

KOLKWITZIA

- K. amabilis.** Beauty Bush. One of the most beautiful of the Arnold Arboretum introductions. In early June a mass of pink flowers ¼ in. across the mouth on arching sprays. Very hardy. 18 to 24 in., \$35.00 per 10; 3 to 3 ft., \$40.00 per 10.

LIGUSTRUM. Privet

- L. amurense.** Amur Privet. Compact growth, small leaves, almost evergreen; does well in a dry place. 2 to 3 ft., \$20.00 per 100; 2 to 4 ft., \$25.00 per 100.



CHIONANTHUS. *Virginica*—(See page 15)

LEIOPHYLLUM

- L. buxifolium.** Sand Myrtle. Small pale pink flowers in June. Small shiny leaves resembling boxwood. 6 to 9 in. clumps, \$20.00 per 10, \$150.00 per 100; 9 to 12 in. clumps, \$25.00 per 10, \$200.00 per 100.
- L. prostratum.** Alleghany Sand Myrtle. A very attractive dwarf form most useful for rockery and small plantings. Neat habit. 6 to 9 in. clumps, \$25.00 per 10; \$200.00 per 100.
- L. ibota.** Chinese Privet. Hardier than *ovalifolium*, large white flowers profusely produced; long, shining leaves; one of the best. 2 to 3 ft., \$25.00 per 100.
- L. ibota regelianum.** Low, dense shrub, branches spread horizontally, obovate leaves, very hardy. 2 to 2½ ft., \$36.00 per 100; 2½ to 3 ft., \$56.00 per 100.
- L. ovalifolium.** California Privet. Vigorous and hardy, bears any amount of shearing; our best shrub for garden hedges. 18 to 24 in., \$9.00 per 100; 2 to 3 ft., \$12.00 per 100; 3 to 4 ft., \$15.00 per 100.
- L. ovalifolium aureum.** A rare yellow-leaved variety, very desirable. 12 to 15 in., \$7.00 per 10, \$30.00 per 100; 2 to 3½ ft., \$10.00 per 10, \$60.00 per 100.
- L. vulgare.** Common European Privet. Narrow foliage, showy white flowers. 2 to 3 ft., \$36.00 per 100.

Deciduous Shrubs



DIERVILLA. Weigela—(See page 16)

LILAC (See Syringa)

LONICERA. Honeysuckle

- L. **fragrantissima**. Fragrant Upright Honeysuckle. A spreading bush with deep green leaves, almost evergreen, small white, very fragrant flowers before the leaves. 2 to 3 ft., \$6.00 per 10; 3 to 4 ft., \$8.00 per 10; \$60.00 per 100.
- L. **morrowi**. A Japanese variety with showy red fruit. 2 to 3 ft., \$6.00 per 10; 3 to 4 ft., \$7.00 per 10.
- L. **tatarica**. White and Pink Bush Honeysuckle, 2 to 3 ft., \$5.00 per 10; 3 to 4 ft., \$7.00 per 10.

MYRICA. Bayberry

- M. **cerifera**. Bayberry. A native shrub with shining, stiff, long, oval leaves, and small bony fruit, very aromatic; fine seaside planting. 18 to 24 in., \$10.00 per 10; \$70.00 per 100.

PHILADELPHUS. Syringa or Mockorange

- P. **Avalanche**. Avalanche Mock Orange. Graceful arching habit. Blooms profusely—long narrow

leaves, 1½ to 2 ft., \$6.00 per 10, \$45.00 per 100; 2 to 3 ft., \$7.00 per 10, \$50.00 per 100.

- P. **Bouquet Blanc**. White Boquet Mock Orange. Low dense habit. Blooms freely in large bunches. May-June. Small leaves. 1½ to 2 ft., \$6.00 per 10, \$40.00 per 100; 2 to 3 ft., \$7.00 per 10, \$50.00 per 100.
- P. **coronarius**. Common Mock Orange. A familiar favorite with fragrant white flowers. 2 to 3 ft., \$6.00 per 10; 3 to 4 ft., \$7.00 per 10.
- P. **grandiflorus**. Large-flowered Syringa. Strong grower, flowering late, less fragrant than the common type, 2 to 3 ft., \$6.00 per 10; 3 to 4 ft., \$8.00 per 10.
- P. **lemoinei**. Lemoine's Syringa. Large, creamy flowers, freely produced, upright growth. 1½ to 2 ft., \$6.00 per 10, \$40.00 per 100; 2 to 2½ ft., \$7.00 per 10, \$50.00 per 100.

POTENTILLA. Shrubby Cinquefoil

- P. **fruticosa**. Shrubby Cinquefoil. Blooms profusely. Clear yellow. June-September. 1½ to 2 ft., \$7.00 per 10, \$50.00 per 100; 2 to 2½ ft., \$9.00 per 10, \$15.00 per 100.

PRUNUS

- P. **James H. Veitch**. Veitch Japan Cherry. The most handsome double flowering cherry cultivated. Has large rose-pink flowers, upright habit; vigorous grower. 3 to 4 ft., \$9.00 each.
- P. **maritima**. Beach Plum. Spreading bush, fine seaside planting, a mass of snow-white flowers followed by crimson purple fruit, which is edible. 1½ to 2 ft., \$7.00 per 10.
- P. **pissardi**. Purple-leaved Plum. White flowers in April, handsome purple foliage, retaining its color through the season; very fine. 3 to 4 ft., \$10.00 per 10; 4 to 5 ft., \$12.00 per 10.
- P. **subhirtella pendula**. Weeping Japan Cherry. Most beautiful and graceful tree covered with pink blossoms in early spring. 3 to 4 ft., \$7.00 each; \$60.00 per 10.
- P. **tomentosa**. Nanking Cherry. A splendid shrub, has pink buds expanding to white flowers—small red fruits relished by birds. 2 to 3 ft., \$8.00 per 10; 3 to 4 ft., \$10.00 per 10; 4 to 5 ft., \$12.00 per 10.
- P. **triloba**. Flowering Almond. A mass of beautiful large pink flowers in May before the leaves appear; very showy. 2 to 3 ft., \$9.00 per 10; 3 to 4 ft., \$10.00 per 10.

RHAMNUS. Buckthorn

- R. **cathartica**. Purging Buckthorn. Robust, thorny, European shrub with dark green leaves, white flowers and black fruit, fine for hedges. 2 to 3 ft., \$7.00 per 10; 3 to 4 ft., \$9.00 per 10.

Deciduous Shrubs

RHODOTYPOS. White Kerria

- R. **kerrioides**. White Kerria. Handsome foliage and large single white flowers, like single Roses in the latter part of May, followed by black, bead-like fruit. 2 to 3 ft., \$8.00 per 10; 3 to 4 ft., \$9.00 per 10.

ROSA

- R. **Hugonis**. Father Hugo Rose. Clear Yellow single flowers freely produced. June. Bushy habit; small decorative foliage. 1½ to 2 ft., \$9.00 per 10.

RHUS. Sumac

- R. **aromatica**. Fragrant Sumac. Native variety with aromatic, fragrant, greenish-white flowers. 2 to 3 ft., \$11.00 per 10.
- R. **copallina**. Shining Sumac. Handsome, shining foliage, turning to gorgeous crimson in Autumn, greenish flowers in August. 2 to 3 ft., \$8.00 per 10; 3 to 4 ft., \$9.00 per 10.
- R. **cotinus**. Purple Fringe, or Smoketree. Spreading shrub, growing 10 to 12 ft. high, covered in Midsummer with curious, smoke-like, fringy, purplish flowers; very attractive. 2 to 3 ft., \$15.00 per 10; 3 to 4 ft., \$18.00 per 10.
- R. **glabra**. Smooth Sumac. Brilliant crimson foliage, topped with prominent clusters of showy seeds in Autumn. 2 to 3 ft., \$7.00 per 10; 3 to 4 ft., \$8.00 per 10.
- R. **glabra var. laciniata**. Cut-leaved Sumac. Deeply cut, fern-like leaves, shining green above, whitish below, glowing red in Autumn. 18 to 24 in., \$9.00 per 10; 2 to 3 ft., \$10.00 per 10.
- R. **typhina**. Staghorn Sumac. Tall variety with scarlet fruit, foliage a brilliant red in Autumn. 2 to 3 ft., \$7.00 per 10; 3 to 4 ft., \$9.00 per 10.

RUBUS. Bramble

- R. **odcratus**. Flowering Raspberry. Pretty pinkish purple flowers, large leaves. 1½ to 2 ft., \$6.00 per 10; 2 to 3 ft., \$7.00 per 10.

SAMBUCUS. Elder

- S. **canadensis**. Common Elder. Rapid growing native shrub, broad heads of white flowers in June, followed by dark red berries. 2 to 3 ft., \$6.00 per 10; 3 to 4 ft., \$7.00 per 10.
- S. **nigra aurea**. Golden Elder. Bright golden yellow foliage, retaining the color throughout the season; very effective among shrubbery, 2 to 3 ft., \$6.00 per 10; 3 to 4 ft., \$7.00 per 10.

SPIRAEA

- S. **Anthony Waterer**. Waterer Spirea. Deep rose-pink—very free flowering all Summer. A compact shrub. 1½ to 2 ft., \$6.00 per 10, \$45.00 per 100; 2 to 2½ ft., \$7.00 per 10, \$50.00 per 100.

- S. **billiardi**. Tall growing shrub with pinkish flowers and bright green leaves. 2 to 3 ft., \$6.00 per 10; 3 to 4 ft., \$7.00 per 10.

- S. **bumalda**. Dwarf habit, narrow leaves, pink flowers nearly all Summer. 18 to 24 in., \$6.00 per 10; 2 to 3 ft., \$8.00 per 10.

- S. **opulifolia**. Ninebark. Strong growing native shrub, with white flowers. 2 to 3 ft., \$6.00 per 10; 3 to 4 ft., \$7.00 per 10.

- S. **opulifolia aurea**. Golden Ninebark. A variety with golden foliage; very noticeable. 2 to 3 ft., \$6.00 per 10; 3 to 4 ft., \$7.00 per 10.

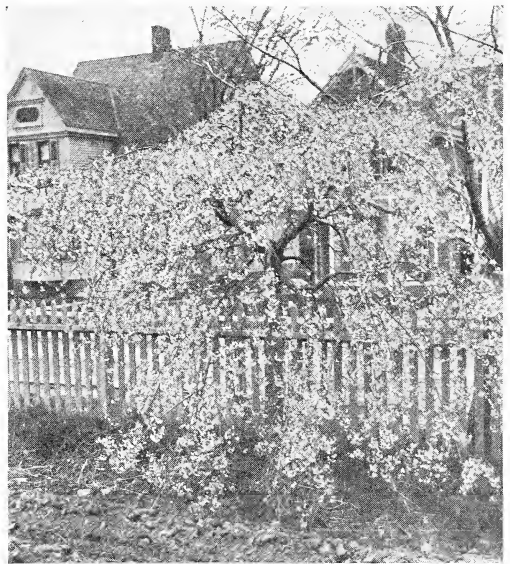
- S. **prunifolia fl. pl.** Bridalwreath. Branches covered with pure white flowers in May, very showy and handsome. 2 to 3 ft., \$6.00 per 10; 3 to 4 ft., \$7.00 per 10.

- S. **reevesi fl. pl.** Reeve's Spirea. Covered with large, round clusters of double white flowers in June; very showy. 2 to 3 ft., \$6.00 per 10; 3 to 4 ft., \$7.00 per 10.

- S. **thunbergi**. Thunberg Spirea. Dwarf, rounded form, white flowers. One of the first to bloom, very satisfactory. 2 to 3 ft., \$7.00 per 10; 3 to 4 ft., \$9.00 per 10.

- S. **tomentosa**. Hardhack or Steeplebush. Small leaves, rose-purple flowers in a dense, terminal panicle. 2 to 3 ft., \$6.00 per 10.

- S. **vanhuottei**. Vanhoutte Spirea. The finest of all Spireas, a mass of large white flowers in May and early June. 2 to 3 ft., \$6.00 per 10; 3 to 4 ft., \$7.00 per 10.



PRUNUS. Japan Weeping Cherry—(See page 18)

Deciduous Shrubs

STEPHANANDRA

- S. flexuosa.** Slender, graceful shrub, with finely cut foliage, loose clusters of white flowers in June, 2 to 3 ft., \$6.00 per 10; 3 to 4 ft., \$8.00 per 10.

SYMPHORICARPOS. Snowberry Coralberry

- S. racemosus.** Snowberry. Slender branched shrub; pink flowers, followed by waxen white berries lasting into Winter. 2 to 3 ft., \$8.00 per 10; 3 to 4 ft., \$9.00 per 10.
- S. vulgaris.** Coralberry. Compact bush with small bright red berries, lasting into Winter. 2 to 3 ft., \$6.00 per 10; 3 to 4 ft., \$7.00 per 10.

STYRAX

- S. japonica.** Handsome small tree, with waxy white, bell-shaped flowers gracefully pendant. 3 to 4 ft., \$10.00 per 10; 4 to 5 ft., \$15.00 per 10.

SYRINGA. Lilac

- S. Charles the Tenth.** Strong grower with large, loose trusses of reddish-purple flowers. 2 to 3 in., \$12.00 per 10.



EXOCHORDA. Pearlbush—(See page 16)

- S. japonica.** Japanese Lilac. Becomes a good sized tree with leathery, dark green leaves, great panicles of creamy flowers a month later than other Lilacs. 2 to 3 ft., \$9.00 per 10; 3 to 4 ft., \$10.00 per 10.
- S. josikaea.** Flowers dark lilac early in June. 2 to 3 ft., \$8.00 per 10; 3 to 4 ft., \$10.00 per 10.
- S. lemoinei fl. pl.** A choice variety, producing long racemes of double purple flowers and lasting longer than most varieties. 18 to 24 in., \$12.00 per 10.
- S. Mme. Casimir Perier.** Semi-double, pure white. 2 to 3 ft., \$12.00 per 10; 3 to 4 ft., \$15.00 per 10.
- S. Marie Legraye.** The finest white Lilac, large panicles of snowy flowers, much used for forcing. 2 to 3 ft., \$12.00 per 10; 3 to 4 ft., \$15.00 per 10.
- S. persica.** Persian Lilac. Small foliage and bright purple flowers. 2 to 3 ft., \$8.00 per 10; 3 to 4 ft., \$12.00 per 10.
- S. persica alba.** Persian White Lilac. Creamy white flowers, shaded purple. 2 to 3 ft., \$10.00 per 10; 3 to 4 ft., \$15.00 per 10.
- S. rubra de Marley.** Deep reddish purple; one of the best dark kind. 2 to 3 in., \$12.00 per 10; 3 to 4 in., \$15.00 per 10.
- S. villosa.** Japanese species, with large branching panicles of white flowers, purple in bud; fragrant; two weeks later than other Lilacs. 2 to 3 ft., \$9.00 per 10; 3 to 4 ft., \$10.00 per 10.
- S. vulgaris.** Common Lilac. Bluish-purple flowers, always satisfactory. 2 to 3 ft., \$7.00 per 10; 3 to 4 ft., \$9.00 per 10.
- S. vulgaris alba.** Common White Lilac. A robust grower, bearing abundant white flowers. 2 to 3 ft., \$9.00 per 10; 3 to 4 ft., \$12.00 per 10.
- S. President Grevy.** Large, double blue; very beautiful. 2 to 3 ft., \$11.00 per 10; 3 to 4 ft., \$15.00 per 10.

TAMARIX. Tamarisk

- T. africana.** Tamarix. Beautiful, small-leaved shrub, suggesting a feathery conifer, flesh-colored flowers in May. 2 to 3 ft., \$5.00 per 10; 3 to 4 ft., \$6.00 per 10.

VACCINIUM

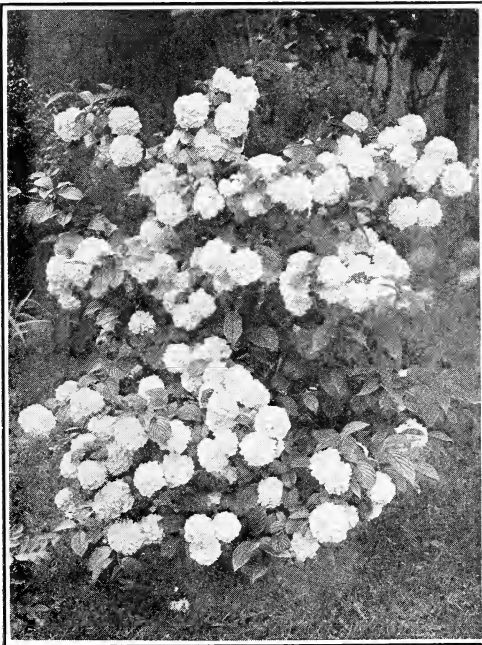
- V. corymbosum.** Swamp Blueberry. 1½ to 2 ft., \$120.00 per 10; 2 to 3 ft., \$15.00 per 10; 3 to 4 ft., \$20.00 per 10.

VIBURNUM. Arrowwood. Snowball

- V. carlesi.** Fragrant Viburnum. One of the most desirable semi-dwarf flowering shrubs with wonderful fragrant flower clusters of white shaded with pink. Foliage nice green. 12 to 15 in., \$25.00 per 10; 15 to 18 in., \$30.00 per 10.
- V. cassinoides.** Withe-rod. Flat heads of white flowers in May, followed by black fruit, thick, handsome ovate leaves. 2 to 3 ft., \$10.00 per 10; 3 to 4 ft., \$12.00 per 10.

Deciduous Shrubs

- V. dentatum.** Arrowhood. This was used by the Indians for arrow making. Greenish white flowers, bright blue fruit, sharply toothed bright green leaves with bronzy-red Autumn coloring. 2 to 3 ft., \$7.00 per 10; 3 to 4 ft., \$9.00 per 10.
- V. lantana.** Wayfaring-tree. Large, strong growing shrub, with thick, roundish leaves, large clusters of white flowers in May, followed by red fruit, turning black. 2 to 3 ft., \$9.00 per 10; 3 to 4 ft., \$10.00 per 10.
- V. lentago.** Sheepberry. Sweet Viburnum. Shrub or small tree; fragrant creamy white flowers, small, sweet, edible fruit, light green handsome leaves, 2 to 3 ft., \$9.00 per 10; 3 to 4 ft., \$12.00 per 10.
- V. molle.** Downy Arrowwood. Coarsely toothed leaves; greenish white flowers, blue, oily fruit. 2 to 3 ft., \$7.00 per 10; 3 to 4 ft., \$10.00 per 10.
- V. nanum.** Dwarf Cranberrybush. Useful for edging or facing shrub. Rarely flowers. Very compact. 9 to 12 in., \$6.00 per 10; \$50.00 per 100; 12 to 15 in., \$9.00 per 10.
- V. opulus.** Cranberry-tree. Highbush Cranberry. Similar to Snowball in bush and foliage; greenish white Hydrangea-like flowers. Edible red berries, hanging until destroyed by frost. 2 to 3 ft., \$9.00 per 10; 3 to 4 ft., \$12.00 per 10.
- V. opulus sterilis.** Guelder Rose. Snowball. Large, strong growing shrub, with huge globular heads of bloom the latter part of May. 2 to 3 ft., \$8.00 per 10; 3 to 4 ft., \$12.00 per 10.



VIBURNUM. Plicatum—(See page 21)



SPIREA. Prunifolia—(See page 19)

- V. plicatum.** Japanese Snowball. Handsome, dark green plaited foliage, large white flower heads, very showy, superior to the European sort. 2 to 3 ft., \$10.00 per 10; 3 to 4 ft., \$12.00 per 10.
- V. prunifolium.** Blackhaw, or Plum-leaved Viburnum. A vigorous growing plant, with strong branches and dark, shining foliage, snow-white flowers in May and June. 2 to 3 ft., \$12.00 per 10; 3 to 4 ft., \$15.00 per 10.
- V. rugosum.** Wrinkleleaf Wayfaring Tree. Has larger and more wrinkled leaves. 18 to 24 in., \$8.00 per 10; 2 to 3 ft., \$8.00 per 10; 3 to 4 ft., \$10.00 per 10.
- V. sieboldi.** Large, dark green leaves, white flowers in May. 2 to 3 ft., \$10.00 per 10.
- V. tomentosum.** Single Japan Snowball. A single form of the Japan Snowball, with dense heads of white flowers, more delicate than the common Guelder Rose. 2 to 3 ft., \$9.00 per 10; 3 to 4 ft., \$12.00 per 10.

YUCCA

- Y. filamentosa.** Adams Needle. Evergreen. Long lance-like leaves. Tall flower spike grows up quickly in June—July. Numerous creamy flowers and general appearance gives tropical effect. Useful for massing with either evergreens or shrubbery. 2 yr., \$5.00 per 10; \$35.00 per 100.

ZANTHORIZA. Yellowroot

- Z. Apifolia.** Good ground cover. Will succeed on dry, sandy soil, banks, etc. Small purplish flowers, May-June. 9 to 12 in., \$5.00 per 10; 12 to 15 in., \$6.00 per 10.

Hardy Climbing and Trailing Vines



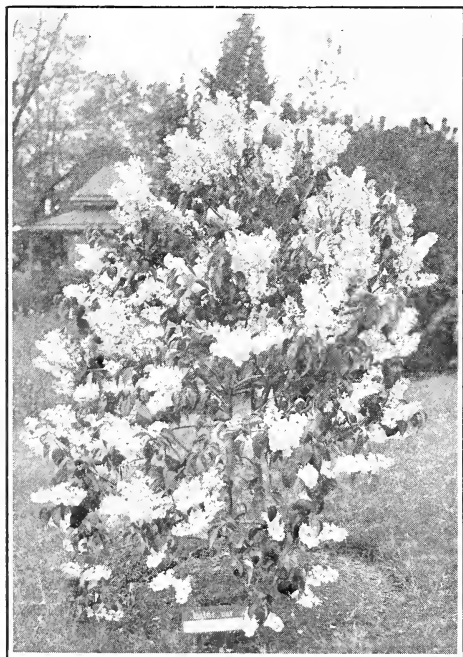
Boston Ivy on the walls and Clematis Paniculata at the door

ACTINIDIA. Silvertine

- A. **arguta**. A Japanese vine with handsome foliage and white flowers, with purple center, very freely produced; edible fruit. 2 to 3 ft., \$7.00 per 10.

AMPELOPSIS. Creeping Ivy

- A. **engelmanni**. Short-jointed form of Virginia Creeper; rapid grower. 2 yr., \$5.00 per 10.



SYRINGA. Marie Legraye—(See page 20)

- A. **heterophylla**. Porcelain Ampelopsis. A good sturdy vine with good foliage and very attractive turquoise colored fruit. \$7.00 per 10; \$50.00 per 100.
- A. **lowi**. Dwarf Cutleaf Boston Ivy. Good variety of the type with smaller deep cut foliage. Very graceful and distinct. \$6.00 per 10.
- A. **quinquefolia**. Virginia Creeper. Rapid growing climber, attaching itself to its support, five-fingered leaves, turning brilliant red in Autumn. 2 yr., \$6.00 per 10.
- A. **veitchi**. Boston Ivy. Small, Ivy-like leaves, overlapping one another so as to form a dense mass; rapid growing, clinging with tiny tendrils. Unequaled for covering brick or frame walls. 2 yr., \$8.00 per 10; \$50.00 per 100.

AKEBIA

- A. **quinata**. Extremely hardy vine, with small dark green leaves hanging on very late; plum-colored, fragrant flowers, very free growing. 2 yr., \$8.00 per 10.

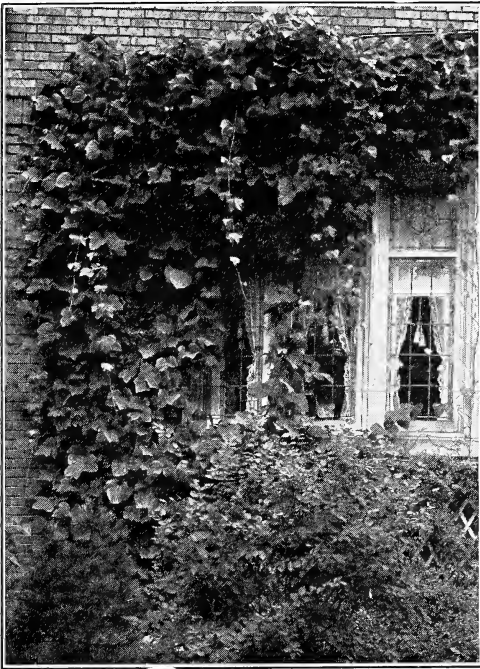
ARISTOLOCHIA. Dutchmans-pipe

- A. **sipho**. Rapid growing native vine, with handsome, large, light green leaves and oddly-shaped small, yellowish brown flowers; forms a dense shade. 2 yr., \$10.00 per 10.

BIGNONIA

- B. **Madam Gallen**. A marked improvement on the preceding. Has large flowers of deeper red coloring. July. 2 yrs., \$7.00 per 10, \$55.00 per 100; 3 yrs., \$9.00 per 10, \$75.00 per 100.

Hardy Climbing and Trailing Vines



DOLICHOS. Japonicus—(See page 23)

CELASTRUS. Bittersweet

- C. **scandens**. Bittersweet Climbing Waxwork. Native twiner, with oval, light green leaves, small yellow flowers and red fruit in orange capsules, hanging long after the leaves; very showy in Fall. 2 yr., \$6.00 per 10.

CLEMATIS

- C. **flammula**. Fragrant Clematis. Sweet-scented white flowers in Midsummer. 2 yr., \$50.00 per 100.
- C. **montana rubens**. Pint Anemone Clematis. A free growing vine which during the Spring is almost covered with a blanket of small delicate pink flowers. Beautiful and hardy. 2 yr., \$10.00 per 10, \$70.00 per 100.
- C. **paniculata**. Japanese Virgins-bower. A very desirable climber, blooming in late Summer, when it produces a mass of small white, fragrant flowers. Hardy and a rapid grower, 2 yr., \$5.00 per 10, \$35.00 per 100.
- C. **virginiana**. American Virgins-bower. Very rapid growing vine, producing a small white flower in August, followed by feathery seeds. 2 yr., \$9.00 per 10, \$30.00 per 100.

DOLICHOS. Kudzu-vine

- D. **japonicus**. Quick growing vine with large, bean-like leaves and pinkish violet, pea-shaped flowers. \$9.00 per 100.

EUONYMUS

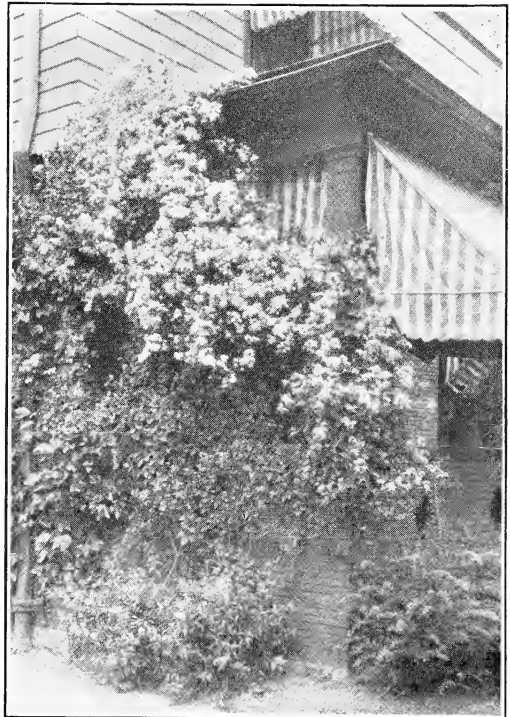
- E. **acutus**. Sharpleaf Wintercreeper. A graceful form with long narrow leaves, white veins,

purplish underneath—attractive. 2 yrs., \$6.00 per 10, \$42.00 per 100.

- E. **carrerei**. Glossy Wintercreeper. Large shiny pointed leaves; shrubby. 2 yr., \$6.00 per 10, \$42.00 per 100.
- E. **colorata**. Similar to *acutus* but purple leaves intensified in winter. 2 yrs., \$7.00 per 10, \$55.00 per 100.
- E. **patens (sieboldianus)**. Spreading Euonymus, Vigorous, forming broad, rather loose shrub; leaves persisting until late winter. Ornamental fruits. Effective among denser conifers. 12 to 15 in., \$8.00 per 10, \$65.00 per 100; 15 to 18 in., \$13.00 per 10, \$110.00 per 100; 1½ to 2 ft., \$22.00 per 10, \$160.00 per 100.
- E. **radicans**. An evergreen vine with neat little, oval leaves, clings to walls like Ivy. Desirable for rockeries. 2 yr., \$6.00 per 10, \$30.00 per 100.
- E. **radicans variegata**. A variety of the above variegated with cream and yellow flowers. 2 yr., \$6.00 per 10.
- E. **vegetus**. A beautiful hardy climbing vine, covered with green foliage through the Winter and a profusion of red berries. One of the best Euonymus. 2 yr., \$6.00 per 10, \$30.00 per 100.

HEDERA. Ivy

- H. **helix**. True or English Ivy. Clinging evergreen, with large, shining dark green leaves. A north exposure is best for it, as it is likely to suffer from sun scald in the Winter if in the fall sun. \$9.00 per 10, \$50.00 per 100. 2 yrs.



CLEMATIS. Paniculata—(See page 23)

Hardy Climbing and Trailing Vines



AMPELOPSIS. Boston Ivy (See page 22)

JASMINUM. Jasmine

- J. nudiflorum.** Yellow Jasmine. Yellow flowers in the early Spring, before the leaves appear. 2 yr., \$7.00 per 10, \$50.00 per 100.

LONICERA. Honeysuckle

- L. brachypoda.** Japanese Honeysuckle. Very vigorous, nearly evergreen. Pale yellow flowers, fading to white; fragrant. 2 yr., \$5.00 per 10, \$40.00 per 100.
- L. halliana.** Hall's Japan Honeysuckle. One of the best. Pure white, fragrant flowers, changing to yellow, from July to December; foliage hangs on until January. 2 yr., \$5.00 per 10, \$40.00 per 100.
- L. heckrottii.** Rose-colored flowers with yellow centers, persistent Summer bloomer, 2 yr., \$7.00 per 10, \$50.00 per 100.
- L. reticulata aurea.** Golden-nettled Chinese Honeysuckle. Attractive variegated form, the leaves veined with gold, bears shearing well, and can be trained on wires to form a charming garden edging. \$5.00 per 10, \$40.00 per 100.
- L. maackii.** Amur Honeysuckle. Large white flowers. June. Small scarlet berries persisting until mid-winter. Loose habit. 2 to 3 ft., \$6.00 per 10, \$45.00 per 100; 3 to 4 ft., \$7.00 per 10, \$50.00 per 100.
- L. podocarpa.** Late Honeysuckle. Smaller pinkish flowers, better fruit than other varieties, holds leaves longer. Vigorous. 2 to 3 ft., \$7.00 per 10, \$50.00 per 100.

LYCIUM. Matrimony-vine

- L. sinensis.** Chinese Matrimony-vine. Vine with small, neat leaves and little pink flowers followed by a highly ornamental red fruit. 2 yr., \$5.00 per 10, \$30.00 per 100.

PACHYSANDRA

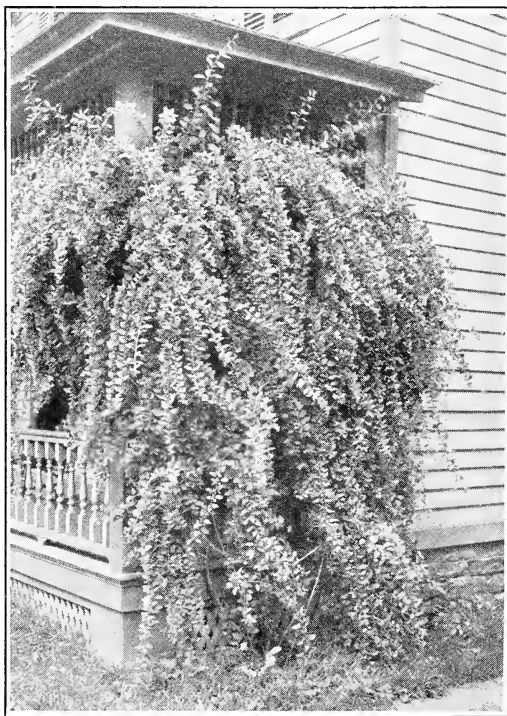
- P. terminalis.** Japanese Spurge. Valuable evergreen ground cover for shade. 2 yrs., \$15.00 per 100, \$120.00 per 1000.

TECOMA. Trumpet-vine

- T. grandiflora.** Chinese Trumpet-vine. Large flowers, salmon yellow, and broad, bell-shaped corollas. \$9.00 per 10, \$50.00 per 100.
- T. Madam Gallen.** A marked improvement on the preceding. Has large flowers of deeper red coloring. July. 2 yrs., \$7.00 per 10, \$55.00 per 100; 3 yrs., \$9.00 per 10, \$75.00 per 100.
- T. radicans.** Common Trumpet-vine. Large, funnel-shaped flowers, orange and scarlet. \$6.00 per 10, \$45.00 per 100.

VINCA. Periwinkle or Myrtle

- V. minor.** Myrtle, Periwinkle. Trailer, with shining evergreen leaves and porcelain-blue flowers; very hardy. 2 yr., \$6.00 per 100, \$45.00 per 1000.



LYCIUM. Matrimony-vine

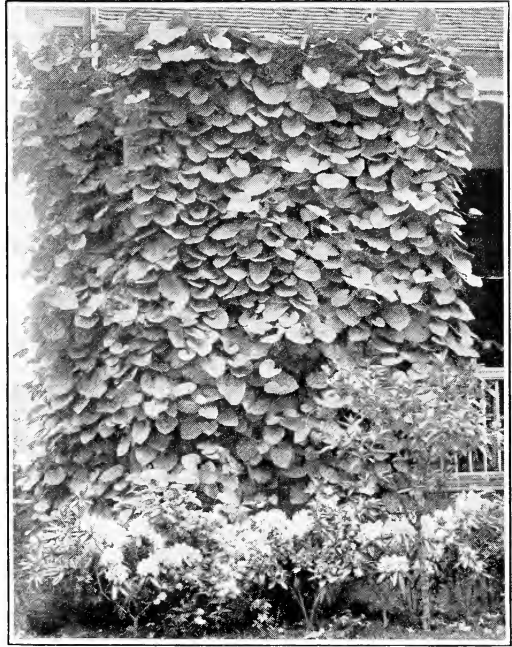
Hardy Climbing and Trailing Vines

WISTERIA

- W. multijuga.** Long Cluster Wisteria. Blue and white varieties. Has long clusters blossoming in May and shows to best advantage when trained on old trees or open trellises. 12 to 18 in., \$9.00 per 10.
- W. sinensis.** Chinese Wisteria. The well-known sort with graceful drooping clusters of lilac flowers; very hardy and strong growing. \$10.00 per 10.
- W. sinensis alba.** A form with pure white flowers, extremely elegant in appearance. \$10.00 per 10.

VITIS. Grapevines

- V. cordifolia.** Frost Grape. Heart-shaped leaves, small black fruit, very sour until frosted. \$9.00 per 10.
- V. labrusea.** Fox Grape. Large leaves with woolly under-surface; large, dark purple fruit. \$9.00 per 10.



ARISTOLOCHIA. Dutchmans-pipe

Ground Covering Plants and Trailers

- COPTIS trifolia.** Goldthread. Shade. \$5.00 per 100, \$30.00 per 1000.
- EPIGAEA repens.** Arbutus. \$16.00 per 100.
- GAULTHERIA procumbens.** Wintergreen. \$4.00 per 100, \$30.00 per 1000.
- LYSIMACHIA nummularia.** Yellow Myrtle. \$5.00 per 100, \$30.00 per 1000.
- MITCHELLA repens.** Squawberry. \$5.00 per 100, \$30.00 per 1000.
- NEPETA glechonina.** Ground Ivy. \$5.00 per 100, \$30.00 per 1000.
- PACHYSANDRA terminalis.** 2 yr., \$15.00 per 100, \$120.00 per 1000.
- RUBUS hispidus.** Running Blackberry. \$6.00 per 100, \$35.00 per 1000.
- THYMUS serpyllum.** Creeping Thyme. \$6.00 per 100, \$30.00 per 1000.
- VERONICA officinalis.** Speedwell. \$5.00 per 100, \$30.00 per 1000.

Roses

- R. **American Pillar**, single red, white center. \$9.00 per 10, \$65.00 per 100.
- R. **Climbing American Beauty**, red. \$9.00 per 10, \$65.00 per 100.
- R. **Emily Gray**, creamy yellow. \$9.00 per 10, \$65.00 per 100.
- R. **Mary Wallace**, bright pink. \$9.00 per 10, \$65.00 per 100.

CLIMBING ROSES

In units of 10 and 100, \$9.00 per 10, \$70.00 per 100, except otherwise noted

- Christine Wright**. Wild-rose pink.
- Dr. W. Van. Fleet**. Pale pink.
- Gardenia**. Creamy white.
- Silver Moon**. Creamy white.
- Tausendschoen**. Creamy white and rose pink. \$13.00 per 10.
- Paul's Scarlet Climber**. Bright scarlet.
- Dorothy Perkins**. Pink.

ROSA RUGOSA

In units of 10, \$10.00 per 10, \$65.00 per 100.

- Rosa rubiginosa**. Sweet Briar. Bright pink. June. Aromatic foliage.
- Rosa rugosa alba**. White Rugosa Rose.
- Rosa setigerta**. Prairie Rose. Tall arching branches, vigorous growth, handsome foliage, deep rose flowers in clusters. June-July.



DR. VAN FLEET

- Rosa spinosissima**. Scotch Rose. A dainty compact grower—branches covered with soft thorns. Has attractive small foliage. Double Pink or Single Creamy Flowers.
- Rosa Rugosa**—wichuriana. Memorial Rose. White—particularly useful for covering banks or boulders. Thick small shining green foliage.

ROSA RUGOSA AND RUGOSA HYBRIDS

In units of 10 and 100, \$9.00 per 10, \$60.00 per 100, except otherwise noted

- Rosa rubiginosa**. Sweet Briar. Bright pink. June. Aromatic foliage. 2 to 3 ft., \$7.00 per 10; 3 to 4 ft., \$9.00 per 10.
- Rugosa rubra**. Large single crimson flowers.
- Rugosa alba**. White.
- F. J. Grootendorst**. Bright red flowers, produced in cluster the whole season.
- Hansa**. Double reddish violet.
- Sir Thomas Lipton**. Snow white, \$12.00 per 10.

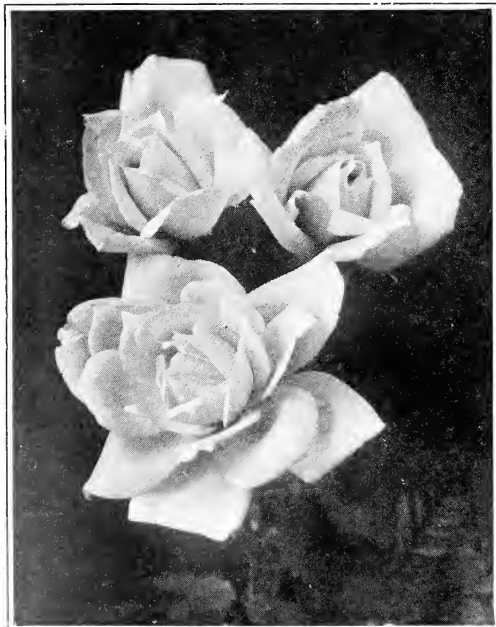
DWARF POLYANTHA or "BABY" ROSES

In units of 10, \$9.00 per 10, \$80.00 per 100

HYBRID PERPETUAL ROSES

In units of 10 and 100, \$9.00 per 10, \$80.00 per 100 except otherwise noted

- General Jacqueminot**. Clear red.
- George Arends**. Soft light pink.



DUCHESS OF WELLINGTON

Roses



LOS ANGELES

Frau K. Druschki. Pink.
J. B. Clark. Light red.
Magna Charta. Bright pink.
J. Laing. Pink.
Paul Neyron. Pink.
Ulrich Brunner. Cherry pink.

HYBRID TEA OR MONTHLY BLOOMING ROSES

In units of 10, \$10.00 per 10, \$80.00 per 100

Duchess of Wellington. Yellow.
Gen. McArthur. Red.
Mad. E. Herriot. Yellow, shaded pink.
Mad. Jules Bouche. White.
Mrs. Aaron Ward. Yellow.
Radiance. Dark pink.
White Killarney. White.

HYBRID TEA AND EVERBLOOMING ROSES

In units of 10 and 100, \$9.00 per 10, \$80.00 per
100 except otherwise noted

Columbia. Bright pink.
Edward Mawley. Dark red.
Etoile de France. Crimson.

Francis Scott Key. Light crimson.
Gruss an Teplitz. Brilliant crimson.
Independence Day. Coppery yellow.
Kaiserin Auguste Viktoria. Snowy white.
Killarney. Bright pink.
Killarney. Double white, snowy white.
Killarney Queen. Bright pink.
Mme. Butterfly. Light pink.
Mme. Caroline Testout. Satiny rose.
Red Radiance. Rose red.
Souv. de Claudius Pernet. Yellow. \$12.00 per
10, \$110.00 per 100.
Willowmere. Rich pink.

POLYANTHUS ROSES OR BABY RAMBLERS

In units of 10, \$10.00 per 10, \$65.00 per 100

Baby Dorothy. Pink.
Eblouissant. Velvety crimson.
Katherine Zeimet. Pure white.
Perle d'or. Creamy yellow.



KILLARNEY

Liliums

LILIUMS

Hansoni. Reflexed blossoms two inches across, petals bright orange-yellow. \$15.00 per 100.

Henryi. Beautiful orange yellow flowers with a green band are very effective. Hardy and easy to grow. \$15.00 per 100.

E. Leonard Joerg. Rich apricot, spotted, very fine. \$3.60 per doz., \$25.00 per 100.

E. Mixed. Mixed shades of orange. \$2.40 per doz., \$16.00 per 100.

Pardalinum (Leopard Lily). Rich scarlet and yellow flowers spotted with rich brown. Robust and free flowering. \$4.00 per doz., \$26.00 per 100.

Regale. The flowers are white, slightly suffused with pink and a beautiful shade of canary yellow at the center, blending out part way up the trumpet. The fragrance is fascinating, similar to the Jasmine. \$7.20 per doz., \$50.00 per 100.

E. Rosea. Coral red, faint black spots. \$4.00 per doz., \$30.00 per 100.

Superbum. Flowers from five to forty nodding brilliant orange red. \$3.20 per doz., \$20.00 per 100.

Tigrinum. fl. pl. (Double-Tiger). Orange red, spotted black. \$3.00 per doz., \$20.00 per 100.

Tigrinum Splendens. Single form, same colors. \$3.00 per doz., \$18.00 per 100.

SPECIOSUA LILIES

Magnificum. A beautiful pure pink variety, exceeding in beauty the famed Melpomene. \$4.50 per doz., \$33.00 per 100.

Melpomene. Frosted white, spotted, clouded and bordered with pinkish crimson. \$4.00 per doz., \$30.00 per 100.

Rubrum. Deep rose, freely spotted. Crimson and mottled white. \$4.40 per doz., \$33.00 per 100.

Hardy Ferns

ADIANTUM. Maidenhair Fern

A. **pedatum.** Finely divided fronds with ebony-black stems. \$9.00 per 100, \$60.00 per 1000.



PEDATUM

ASPIDIUM. Christmas Fern

A. **acrostichoides.** Christmas Fern. Long, glossy, deep green fronds; evergreen. \$9.00 per 100, \$60.00 per 1000.

A. **marginale.** Narrow fronds. 1/2 ft. long, toothed; damp places. \$9.00 per 100, \$60.00 per 1000.

A. **spinulosum.** Thin finely cut fronds, evergreen. \$9.00 per 100, \$60.00 per 1000.

DICKSONIA. Gossamer Fern

D. **punctilohula.** Slender and finely cut, pale green. \$7.00 per 100, \$50.00 per 1000.

ONOCLEA

O. **sensibilis.** Sensitive Fern. \$6.00 per 100, \$50.00 per 1000.

O. **struthiopteris.** Ostrich Fern. \$12.00 per 100, \$65.00 per 1000.

OSMUNDA. Cinnamon Fern

O. **oinnamomea.** Divided fronds covered with reddish wood when young; very handsome. \$10.00 per 100, \$80.00 per 1000.

POLYPODIUM

P. **vulgare.** Polypody. Evergreen variety, well suited for rockeries. \$7.00 per 100, \$50.00 per 1000.

Ornamental Grass

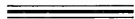
EULALIA

- E. gracillima.** A very handsome Japanese grass, forming a broad clump, narrow dark green leaves, with silver white midrib. Bears a feathery plume of flowers in Autumn. \$5.00 per 10, \$20.00 per 100.
- E. japonica.** Tall grass with plain green leaves, attaining a height of 5 to 7 ft., \$5.00 per 10, \$20.00 per 100.
- E. zebrina.** Zebra Grass. Leaves barred with bright yellow, very striking. \$5.00 per 10, \$20.00 per 100.



PHALARIS. Ribbon Grass

- P. arundinacea variegata.** Large variegated foliage, valuable for edging and large beds. \$9.00 per 10, \$30.00 per 100.



GRASS SEED

For all purposes. Send list of wants for price.

For trees of larger size and quantities not given herein, kindly send list of wants, stating quantity and size, for price.



EULALIA. *Gracillima*



Fruit Trees

APPLE TREES

5 to 6 ft., first class, \$10.00 per 10, \$60.00 per 100
6 to 7 ft., X, \$18.00 per 10, except
where otherwise noted

SUMMER VARIETIES

- Early Harvest.** Pale yellow; acid.
Sweet Bough. Yellow, sweet.
Red Astrachan. Red, acid.
Summer Rambo. Red, sub-acid.
Yellow Transparent. Yellow, sub-acid.

AUTUMN VARIETIES

- Duchess of Oldenburg.** Yellow, streaked red, sub-acid.
Fall Pippin. Yellow, sub-acid.
Gravenstein. Striped and splashed red on yellow, sub-acid.
Maidens Blush. Yellow, red cheek; sub-acid.

WINTER VARIETIES

- Baldwin.** Red, sub-acid.
Ben Davis. Red, acid.
Delicious. Red, sub-acid.
Grimes Golden. Yellow, sub-acid.
Jonathan. Red, sub-acid.
Northern Spy. Striped Red, sub-acid.
R. I. Greening. Green, ripening yellow, acid.
Roxbury Russet. Greenish russet, sub-acid.
Stayman's Winesap. Red, acid.
Wealthy. Yellowish, shaded dark red, sub-acid.

CHERRY TREES. Sweet Cherries

- 5 to 6 ft., first class, \$12.50 per 10, \$100.00 per 100
extra size, \$18.00 per 10
- Black Tartarian.** Very large, purplish black, June to July.
Napoleon Bigarreau. Pale Yellow, red cheek. Late.
Windsor. Black, over-spread red, valuable. July.

Fruit Trees

SCHIRRID'S BIGARREAU

Sour Cherries

4 to 5 ft., first class, \$12.00 per 10, \$100.00 per 100
5 ft. up, \$20.00 per 10

Early Richmond. Clear red, very productive. Early.

Montmorency. Large, bright red, very hardy and productive. Med.

PEACH TREES

4 to 5 ft., first class, \$6.00 per 10, \$50.00 per 100
5 to 6 ft., X, \$10.00 per 10

Belle of Georgia. White, red cheek. August.

Carman. Large creamy white, red cheek, white, splashed red. Medium.

Champion. Creamy white flesh. Early to mid-season.

Crawford's Late. Very fine and yellow. End of September.

Elberta. Lemon yellow red blush, yellow flesh. Medium late.

Fox Seedling. White freestone, good for shipping. Medium.

Greensboro. Red, shaded yellow, white flesh. Early.

J. H. Hale. Red, white flesh. Midseason.

Old Mixon Free. Greenish white and red, hardy. Early.

Stump the World. Red and white, handsome, productive. End September.

PEAR TREES

5 to 6 ft., first class, \$12.50 per 10, \$90.00 per 100
6 ft. up, \$20.00 per 10

SUMMER VARIETIES

Bartlett. Large yellow, one of the best; very juicy and highly flavored. August and September.

Clapp's Favorite. Large, yellow, dotted red. Ripens just before Bartlett.

AUTUMN VARIETIES

Beurre d'Anjou. Large russet yellow, delicious. September.

Duchess d'Angouleme. Very large, greenish yellow, juicy, excellent. October and November.

Kieffer. Large golden yellow, dotted brown, good for canning. October and November.

Seckel. Small but very juicy and rich. September.

Sheldon. Round, russet, rich and melting. October.

WINTER VARIETIES

Lawrence. Large, golden yellow, high quality, buttery, rich and aromatic. Keeps until March.

Mount Vernon. Medium to large, skin yellow, russet color, juicy, aromatic. November to January.

DWARF PEAR TREES

3 to 4 ft., \$10.00 per 10, \$85.00 per 100
VARIETIES: Bartlett, Clapp's Favorite, Kieffer, Seckel, Duchess d'Angouleme

PLUM TREES

4 to 5 ft., first class, \$10.00 per 10, \$80.00 per 100
6 to 7 ft., X, \$18.00 per 10

Bradshaw. Dark violet red, very productive. Early.

German Prune. Medium, purple or blue. September.

Imperial Gage. Large, greenish, delicious. Middle of August.

Lombard. Violet red, very hardy and productive. September.

Japanese Varieties

Abundance. Amber turning to red. Early.

Burbank. Orange yellow, suffused red, midseason to late.

NUTS

Walnut. Black. 2 to 3 ft., \$13.00 per 10; 3 to 4 ft., \$18.00 per 10; 4 to 5 ft., \$25.00 per 10.



CHAMPION

Small Fruits

BLACKBERRY BUSHES

\$12.00 per 100

Eldorado. Jet black.

Rathbun. A new variety. Berries extra large.

Joy. Large and sweet.

CURRENTS

2 yr., \$3.00 per 10, \$20.00 per 100

Cherry. Red.

Fay's Prolific. Red.

Perfection. A new variety, mild, sub-acid. \$4.00 per 10, \$35.00 per 100.

White Grape. White.

GOOSEBERRIES

2 yr., \$4.00 per 10, \$25.00 per 100

Houghton. Red.

Josselyn. Red Jacket. Red. \$4.00 per 10, \$30.00 per 100.

Downing. Fine American sort. Whitish green.



CONCORD. Black



RASPBERRIES. Cumberland

GRAPES

2 yr., \$6.00 per 10, \$30.00 per 100.
except where otherwise noted

Agawam. Red.

Brighton. Coppery red.

Campbell's Early. Black.

Catawba. Coppery red.

Concord. Black.

Delaware. Red.

Moore's Diamond. Yellowish green.

Moore's Early. Black.

Niagara. White.

Wilder. Black.

Worden. Black.

RASPBERRIES

\$12.00 per 100, except otherwise noted

Columbia. Large, purple.

Cumberland. Black.

Cuthbert. Crimson, large.

Golden Queen. Light yellow. \$15.00 per 100.

St. Regis. Everbearing. \$15.00 per 100.

STRAWBERRIES

STRAWBERRIES

EVERBEARING VARIETIES. \$5.00 per 100

ORDINARY VARIETIES. \$2.00 per 100



Vegetables

ASPARAGUS

Strong 2 yr. roots, \$4.00 per 100, \$25.00 per 1000

VARIETIES(Barr's Mammoth, Conover's
Colossal and Palmetto

INDEX

DECIDUOUS SHADE and ORNA- MENTAL TREES		Page
Acer	1	
Amelanchier	1	
Andromeda	1	
Angelica	1	
Aralia	1	
Ash	3	
Beech	3	
Betula	1	
Carpinus	2	
Catalpa	2	
Celtis	2	
Cercidiphyllum	2	
Cercis	2	
Coffeetree	3	
Corktree	3	
Cornus	2	
Crab Apple	4	
Crataegus	3	
Dogwood	2	
Elm	6	
Fagus	3	
Fraxinus	3	
Gymnocladus	3	
Hawthorn	3	
Hornbeam	2	
Judas-tree	2	
Katsura-tree	2	
Koelreuteria	3	
Larch	3	
Larix	3	
Linden	6	
Liquidambar	4	
Liriodendron	4	
Magnolia	5	
Maidenhair-tree	6	
Malus	4	
Maple	1	
Maple, Japanese	1	
Morus	5	
Mulberry	5	
Oak	6	
Peach	5	
Persica	5	
Phellodendron	5	
Planetree	5	
Platanus	5	
Poplar	5	
Populus	5	
Quercus	6	
Salisburia	6	
Salix	6	
Sorbus	6	
Sweetgum	4	
Tilia	6	
Tuliptree	4	
Ulmus	6	
Varnish-tree	3	
Willow	6	

EVERGREEN TREES		Page
Abies	7	
Arborvitae	7 and 9	
Biota	7	
Cryptomeria	7	
Cypress, Japan	8	
Fir	7	
Hemlock	10	
Juniper	7	
Juniperus	7	
Picea	8	
Pine	8	
Pinus	8	
Retinospora	8	
Spruce	8	
Taxus	9	
Thuja	9	
Tsuga	10	
Yew	9	

EVERGREEN SHRUBS		Page
Azalea	11	
Box	11	
Buxus	11	
Cotoneaster	11	
Daphne	11	
Euonymus	11	
Holly	11	
Ilex	11	
Kalmia	11	
Laurel	11	
Mahonia	12	
Pieris	12	
Pyracantha	12	
Rhododendrons	12	

DECIDUOUS SHRUBS		Page
Abelia	13	
Amorpha	13	
Amygdalus	13	
Aralia	13	
Aronia	13	
Azalea	13	
Baccharis	13	
Barberry	14	
Bayberry	18	
Benzoin	13	
Berberis	13	
Buddleia	14	
Callicarpa	14	
Calluna	14	
Calycanthus	14	
Caryopteris	14	
Ceanothus	14	
Chionanthus	14	
Clethra	15	
Colutea	15	
Cornus	15	
Cydonia	15	
Desmodium	15	
Deutzia	15	
Diervilla	16	
Elaeagnus	16	
Euonymus	11 and 16	
Exochorda	16	
Forsythia	16	
Fringe, White	15	
Halesia	16	
Hamamelis	16	
Hibiscus	16	
Hydrangea	17	
Hypericum	17	
Ilex	17	
Itea	17	
Kolkwitzia	17	
Leiophyllum	17	
Ligustrum	17	
Lilac	18	
Lonicera	18	
Myrica	18	
Philadelphus	18	
Potentilla	18	
Privet	17	
Prunus	18	
Rhamnus	18	
Rhodotypos	19	
Rhus	19	
Rosa	19	
Rose-of-Sharon	16	
Rubus	19	
Sambucus	19	
Snowball	20	
Spiraea	19	
Stephanandra	20	
Styrax	20	
Symphoricarpos	20	
Syringa	20	
Tamarisk	20	
Tamarix	20	
Vaccinium	20	

Deciduous Shrubs—Con.		Page
Viburnum	20	
Virginia Tea	17	
Weigela	16	
Yucca	21	
Zanthoriza	21	

HARDY CLIMBING and TRAILING VINES		Page
Actinidia	22	
Akebia	22	
Ampelopsis	22	
Aristolochia	22	
Bignonia	22	
Bittersweet	23	
Celastrus	23	
Clematis	23	
Coptis	25	
Dolichos	23	
Dutchmans-pipe	22	
Epigaea	25	
Euonymus	23	
Gaultheria	25	
Grapevines	25	
Ground Covering Plants and Trailers	25	
Hedera	23	
Honeysuckle	24	
Ivy	23	
Jasminum	24	
Kudzu-vine	23	
Lonicera	24	
Lycium	24	
Lysimachia	25	
Matrimony-vine	24	
Mitchella	25	
Myrtle	24	
Nepta	25	
Pachysandra	24 and 25	
Periwinkle	24	
Rubus	25	
Tecoma	24	
Thymus	25	
Trailers and Ground Cov- ering Plants	25	
Trumpet-vine	24	
Veronica	25	
Vinca	24	
Vitis	25	
Wisteria	25	

HARDY FERNS		Page
Adiantum	28	
Aspidium	28	
Christmas Fern	28	
Cinnamon Fern	28	
Dicksonia	28	
Gossamer Fern	28	
Maidenhair Fern	28	
Onoclea	28	
Osmunda	28	
Ostrich Fern	28	
Polypodium	28	
Sensitive Fern	28	

ROSES		Page
Climbing	26	
Dwarf Polyantha	26	
Hybrid Perpetual	26	
Hybrid Tea and Everblooming	27	
Rugosa	26	

MISCELLANEOUS		Page
Liliums	28	
Ornamental Grass	29	
Fruit Trees	29	
Grass Seed	29	
Small Fruits	31	
Vegetables	31	



Kalmia (Mountain Laurel) and Rhododendrons in a Private Park